

CONTENTS

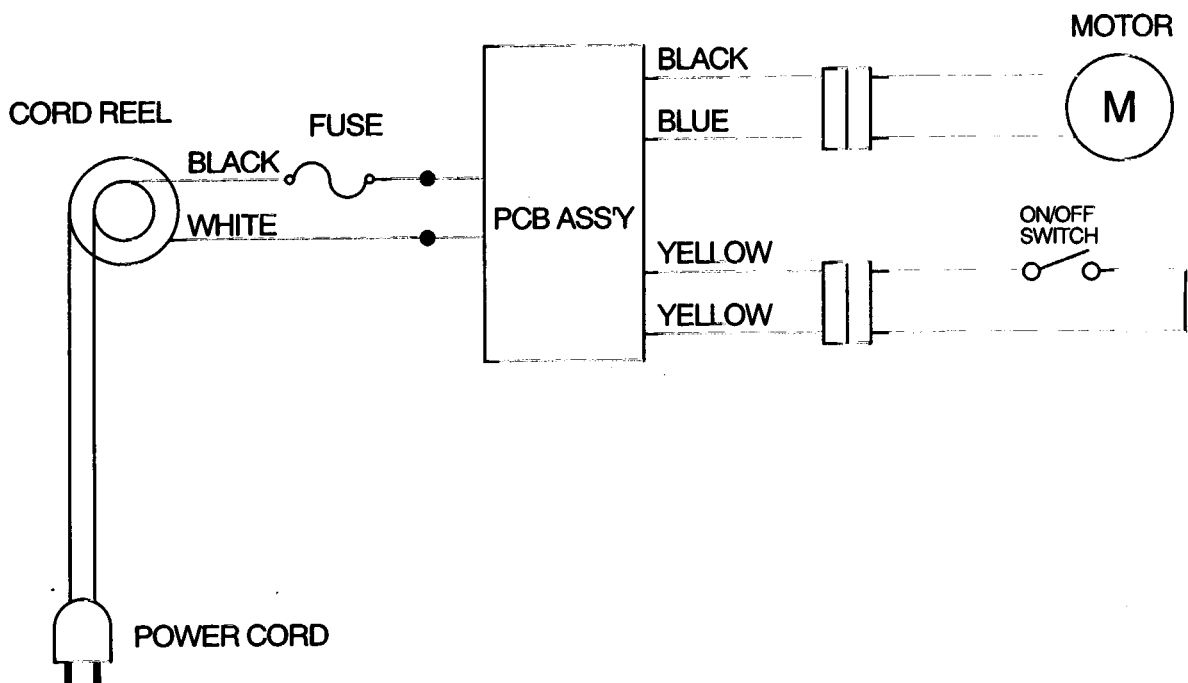
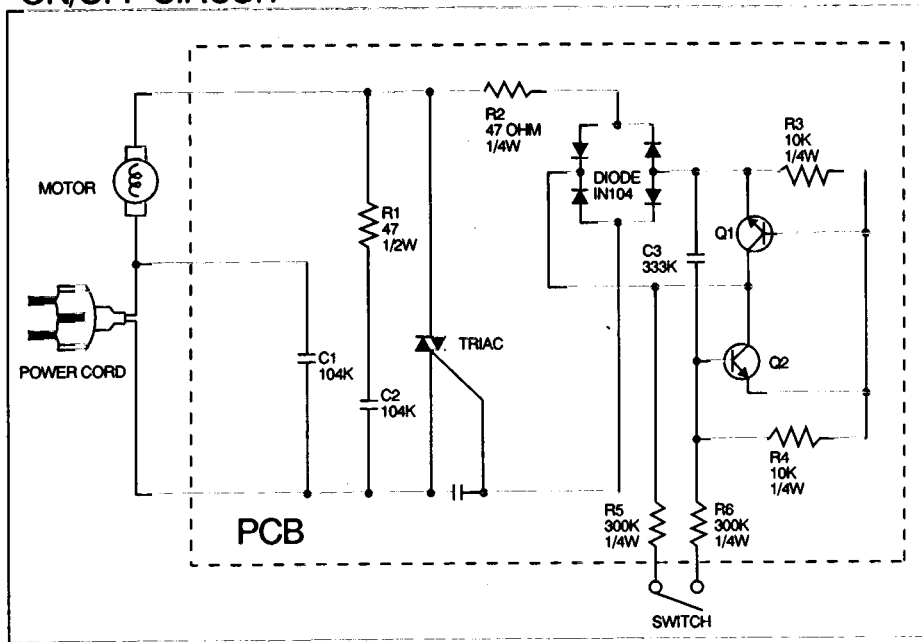
1.SPECIFICATION	1
2.CIRCUIT DIAGRAM	2
3.CAUSE OF TROUBLE AND COUNTERMEASURE	3
4.EXPLODE VIEW AND PARTS LIST	4
- BODY ASSY	6
- CORD REEL ASSY	7
- COVER ASSY	8
- HOSE LINE ASSY	9
- SUCTION BRUSH ASSY	10
- TURBO BRUSH ASSY	11

SPECIFICATION

RATED VOLTAGE AND RATED FREQUENCY	AC 100V/ 50~60Hz AC 110V/ 50~60Hz AC 220 / 50~60Hz AC 230V / 50~60Hz
RATED INPUT	670 W
DIMENSION (WXLXH)	410X245X195 (MM)
NET WEIGHT	4.2 Kg
CORD LENGTH	5 m

CIRCUIT DIAGRAM

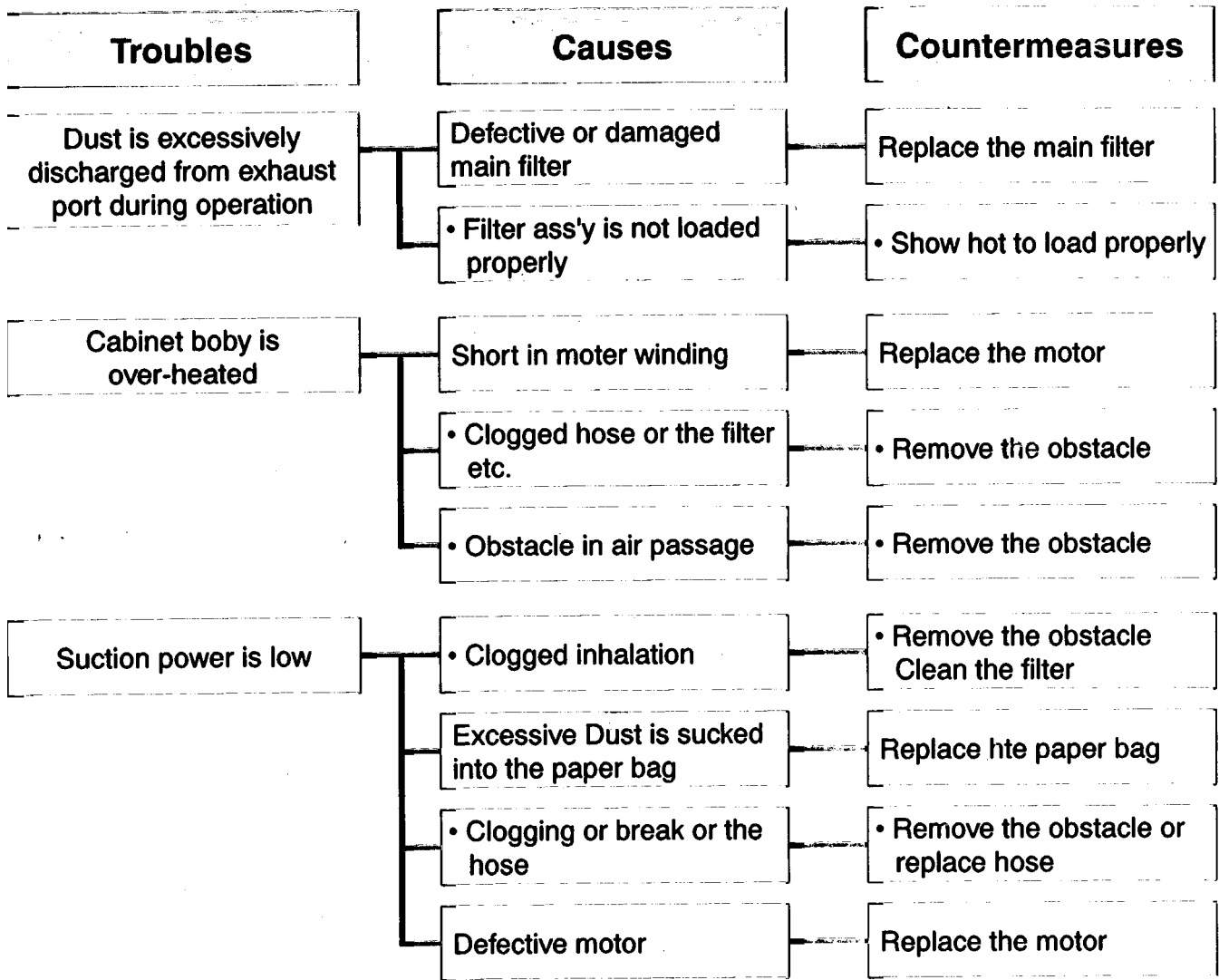
ON/OFF CIRCUIT



CAUSE OF TROUBLE AND COUNTERMEASURE

In this table, •mark items (shaded in black) are often are mistakenly regraded as troubles. Please instruct the customer in the proper use. (Also refer to opentation manual.)

Troubles	Causes	Countermeasures
Moter does not rotate	Break power cord. (at blade tio or not of plug)	Replade the power cord
	Abrasion of the cintact plate	Replace or repair
	Break the fuse	Replace the fuse
	Abrasion of the lead wires	Replace the carbon brush (in pair)
	Broken the lead wires	Repair (Solder or use closed end terminal)
	Defective swich	Replace the swich
	Break in other connections	Repair
Mother does not stop even it the switch is set "OFF"	Defective switch	Replade the switch
Cord can not be wound up at all	Broken the spring of reeldrum ass'y	Replade the real drum ass'y
	Defective reel shaft	Replace the reel durm ass'y
	Insufficient reserved winding	Add proper reserved winding
	Entanglement of cord	Draw out the cord 1m to 3m and wind up again
Cord does not stop at arbitrary position	Sticking dust or grease on the brake roller	Clean
	Abrasion of brake roller	Replace the brake assembly



■ How to disassemble the vacuum cleaner

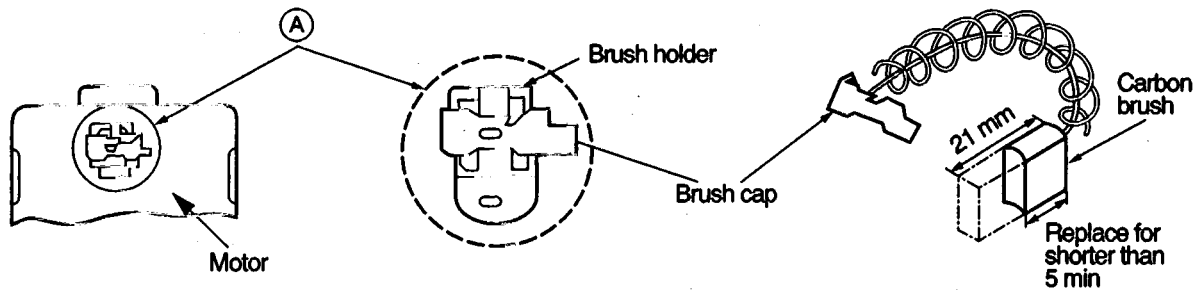
- (1) Open the cover body ⑪ at the body (up) ass'y
- (2) Remove the 2 screws ⑨ with "+" drive or "L" type
- (3) disassemble the body (up) ass'y

■ Replacing the fuse

- (1) Cut the wire coupled with connector
- (2) Melt the lead of terminal Y-A ass'y ⑳ at the body (down) ass'y
- (3) Remove the fuse troubled
- (4) Couple a new fuse [250V, 10A] at rated (100V, 110V) or [250V, 6A] at rated (220V, 230V).

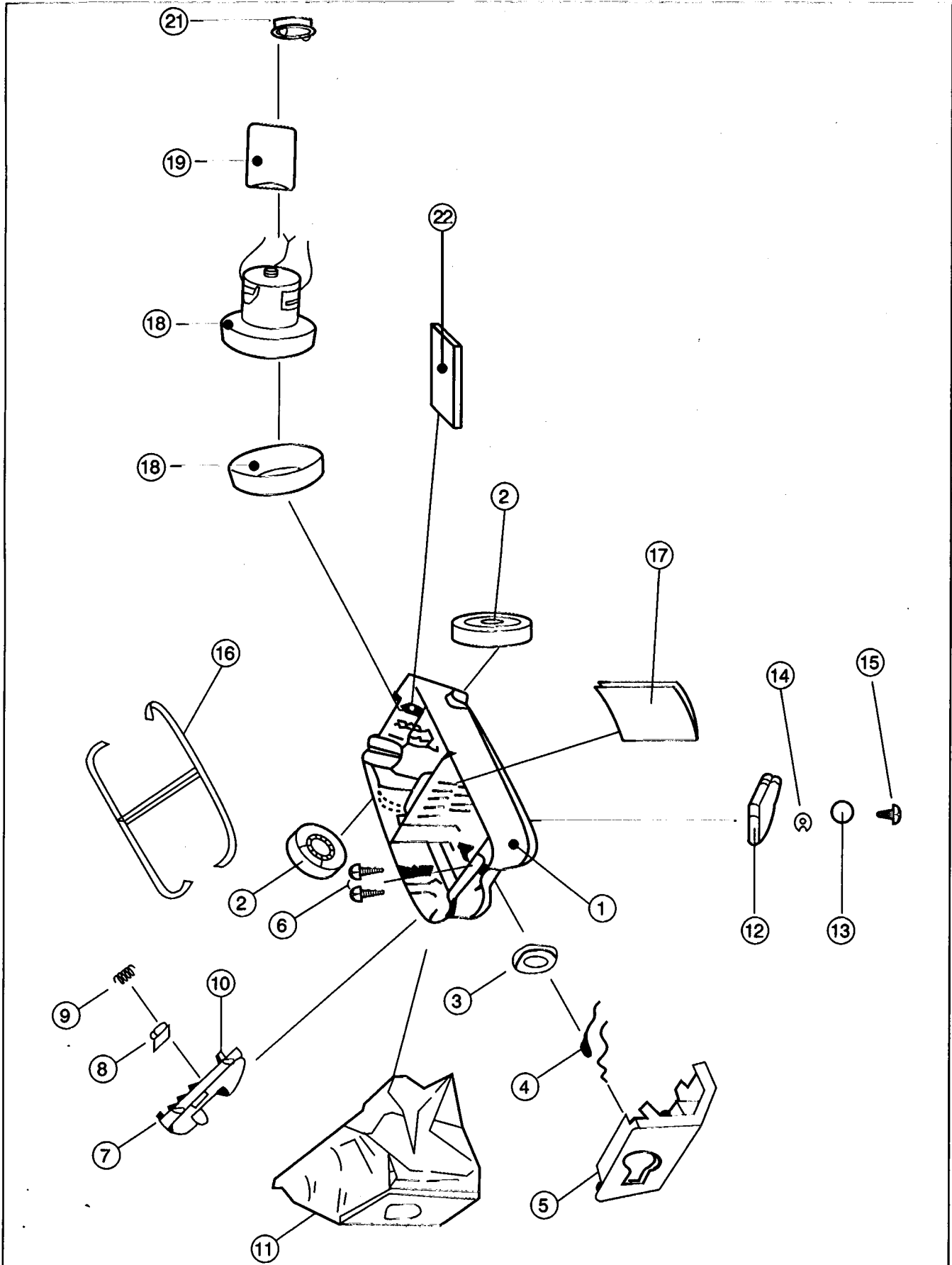
■ Replacing the Carbon brush

- (1) Remove the motor assembly.
- (2) Remove the brush caps from the brush holders at the left and right sides of the motor and remove the carbon brush, spring.
- (3) When the carbon both brushes even if only on brush is worn. After replacing the carbon brushes, check the spark.



EXPLODED VIEW AND PARTS LIST

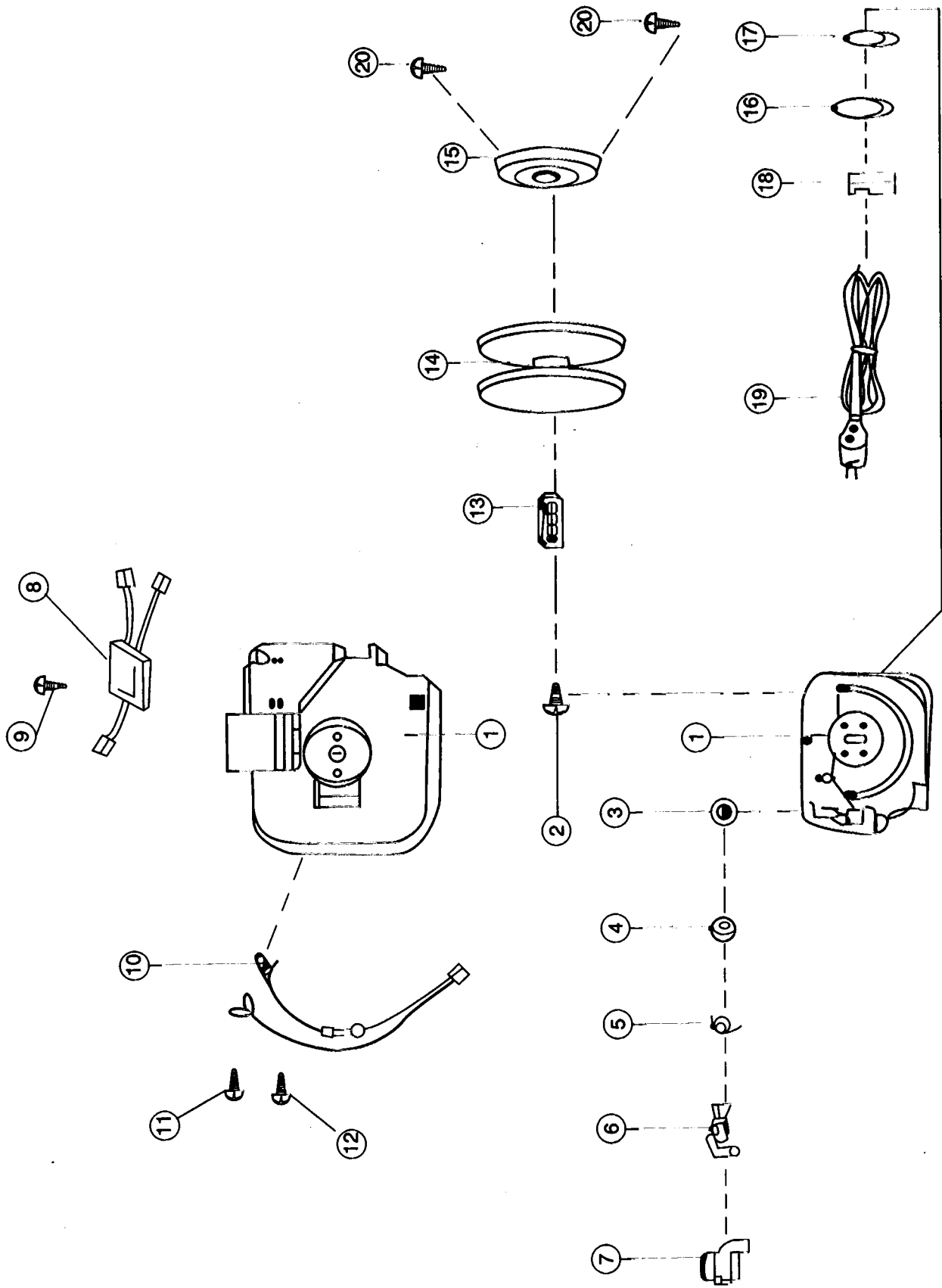
1. Body Ass'y



BODY PARTS LIST

NO.	PART NAME	PARTCORE	SPEC.	Q'TY	NOTE
1	BODY	4568A20015	ABS	1	
2	CASTER BACK	4568A20020	PP BACK	2	
3	PACKING SOCKET	4568F20031	NR	1	
4	Z-RERMINAL AS	4568A51001	Z TERMINAL HOUS'		
5	SOCKET	4568A20041	ABS	1	
6	SCREW TAPPING	7121401411	T2S PAN 4 * 14 MFZN	2	
7	HOLDER BASE	4568A25010	ABS	1	
8	HOLDER FILTER	4568A25020	ABS	1	
9	SPRING	4568A25030	STS 304-W1(SUS304)	1	
10	SCREW TAPPING	7121401411	T2S PAN 4 * 14 MFZN	1	
11	BAG FILTER	4569A59000		3	
	CLOTH BAG	3621900900		1	
12	BRACKET ROLLER	4568A54010	PP	1	
13	ROLLER	4568G54020	PP	1	
14	PLATE BRACKET	4568G50140	SPG T=1.2	1	
15	SCREW TAPPING	7121401211	T2S PAC 1 * 12 MEZN	1	
16	GASKET BODY	4568A20100	PVC-S	1	
17	FILTER	4568A20050		1	
18	MOTOR UNIVERSAL	4568G80006	100V, 670W	1	
		3962230110	110V, 670W		
		4560G80021	220V, 670W		
		3962530100	230V, 670W		
19	ABSORBER MOTER	4568A20062	PU-FOAM NON-COMB	1	
20	CAP MOTOR * F	4568A20072	NR FORM	1	
21	CAP MOTOR * B	4568A20080	NR. FORM	1	
22	FILTER	4568A20090	SPONGE	1	

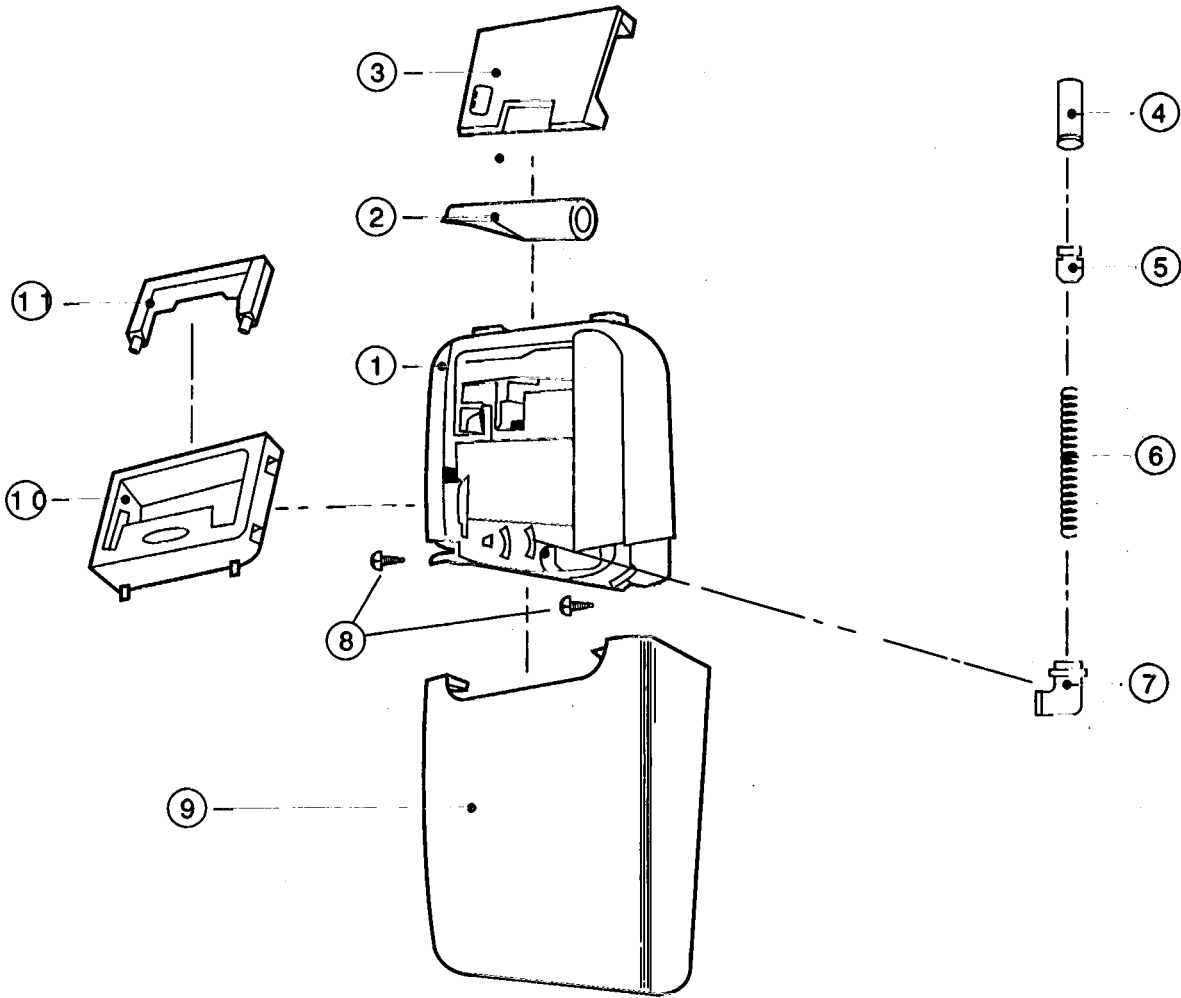
2. Cord Reel Ass'y



CORD REEL ASSY PART LIST

NO.	PART NAME	PARTCORE	SPEC.	Q'TY	NOTE
1	BRACKET CR	4568A35020	PP	1	
2	SCREW TAPPING	7125401411	T2S FLT 4 * 14 MFZN	1	
3	FRAME STOPPER	4564A35070	POLY ACETAL	1	
4	STOPPER CR	4568A35082	NBR	1	
5	SPRING	4568A35090	STS304(SUS304)	1	
6	LEVER CR	4568A35060	ABS	1	
7	BUTTON CR	4568A35030	ABS	1	
8	PCB AS	4560C27003	ON/OFF 170 HOUSING	1	
9	SCREW TAPPING	7121401211	T2S PAN 4 * 12 MFZN	1	
10	TERMINAL AS YB	4568A43010	Y-TER+HOUS+FUSE	1	
11	SCREW TAPPING	7121400811	T2S PAN 4 * 8 MFZN	1	250V/10A, 250V/6A
12	SCREW TAPPING	7121400811	T2S PAN 4 * 8 MEZN	1	
13	SHAFT REEL	4568A35050	ABS	1	
14	BOBBIN	4565A35013	ABS, NATURAL	1	
15	SPRING AS	3625102000	SUS301-EH+COVER	1	
16	TERMINAL	4565A36024	C2600P-1/2H to.3	1	
17	TERMINAL	4565A36034	C2600P-1/2H to.3	1	
18	HOLDER TERMINAL	4565A36010	ABS	1	
19	PLUG DORD AS.	4568F38011	250V/7A	1	220V
		4568F38022	250V/7A 4		220V CHILE
		4560F38020	125V/12A		100V
20	SCREW TAPPING	7121300811	T2S PAN 3 * 8 MEZN	2	

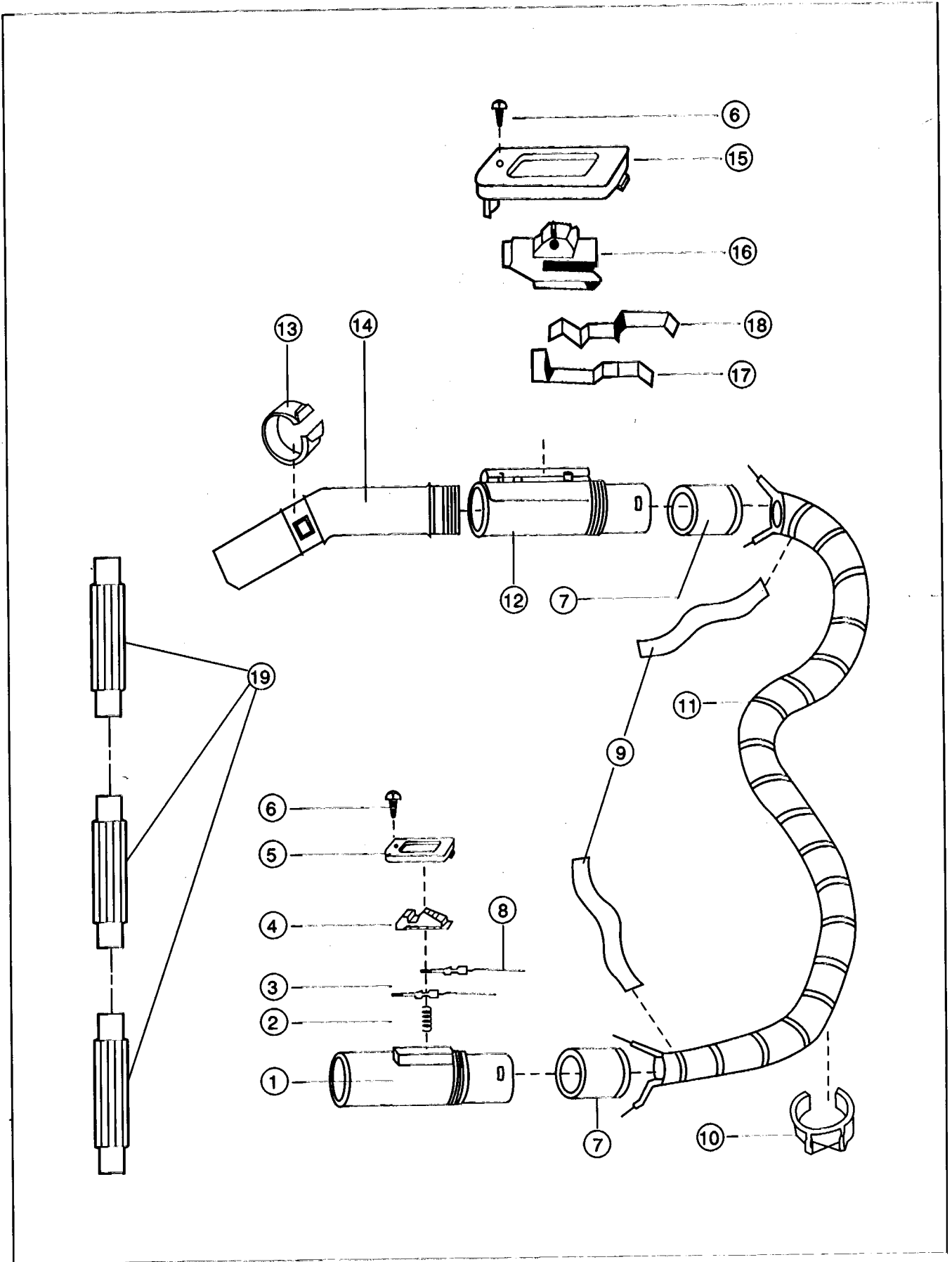
1. Cover Ass'y



COVER ASSY PARTS LIST

NO.	PART NAME	PARTCORE	SPEC.	Q'TY	NOTE
1	COVER BODY	4568A24010	ABS	1	
2	NOZZLE CREVICE	4568A24020	PP	1	
3	COVER NOZZLE	4568A24035	ABS	1	
4	HOUSING DM	4568A23011	MS-2000	1	
5	DUST METER	4568A23020	ABS	1	
6	SPRING DM	4568A23033	SUS304	1	
7	PACKING DM	4568A23040	NR	1	
8	SCREW TAPPING	7121403011	T2S PAN 4 * 30 MFZN	2	
9	COVER DUST	4568F52002	ABS	1	
10	HANDLE BASE	4568A55012	ABS	1	
11	HANDLE BODY	4568A55020	ABS	1	

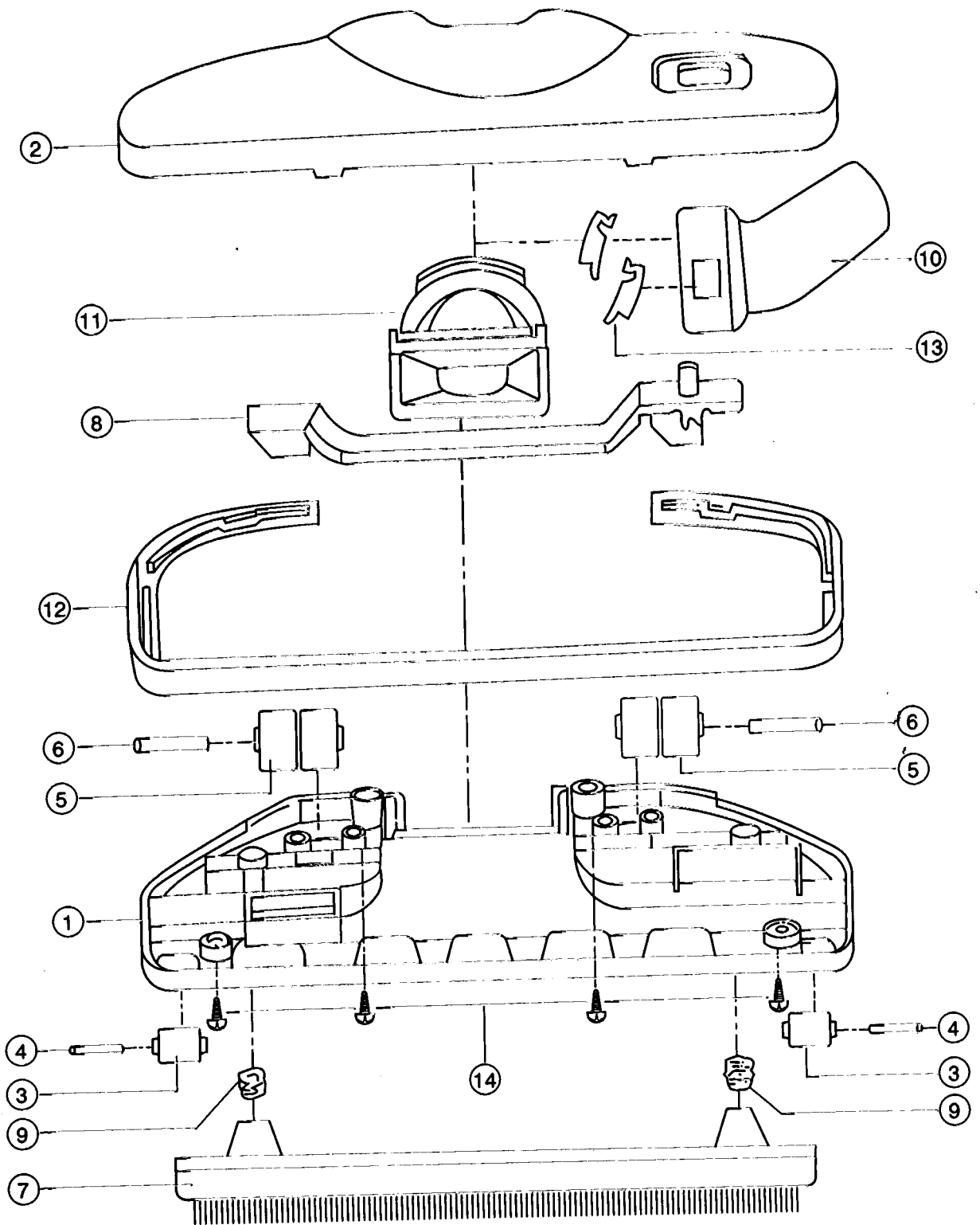
4. Hose Line Ass'y



IOSE LINE ASSY PARTS LIST

NO.	PART NAME	PARTCORE	SPEC.	Q'TY	NOTE
1	ADARTER HOSE	4565A70010	ABS	1	
2	SPRING	4565A70050	HSW3	1	
3	PIN TERMINAL	4568A70020	C2800W-H	2	
4	BUTTON ADAPTER	4565A70061	ABS	1	
5	COVER	4565A70070	ABS	1	
6	SCREW TAPPING	7121300811	T2S PAN 3X8	2	
7	COVER HOSE	4565A70040	PP	2	
8	WIRE CONNECTION	4565A70030	SW D0.7	0.15	
9	TAPE VINYL	2TV00019BK	UL/CSA W19MM BLACK	0.30	
10	HOOK	4560F77000	PP	1	
11	HOSE	4565A71001	PVE-S/SWRS 1.32M	1	
12	FRAME SWITCH	4560K70080	ABS	1	
13	RING AIR DAJUSTMNT	4560F70150	PP	1	
14	PIPE HOSE	4560F70131	PP	1	
15	COVER SWITCH	4565A70120	ABS	1	
16	KNOB	4564A70080	NYLON 66	1	
17	TERMINAL	4565A70093	C5210P-EH T0.2	12	
18	TERMINAL	4565A70102	C5210P-EH T0.2	1	
19	PIPE EXTENSION	4568A75000	PP	3	

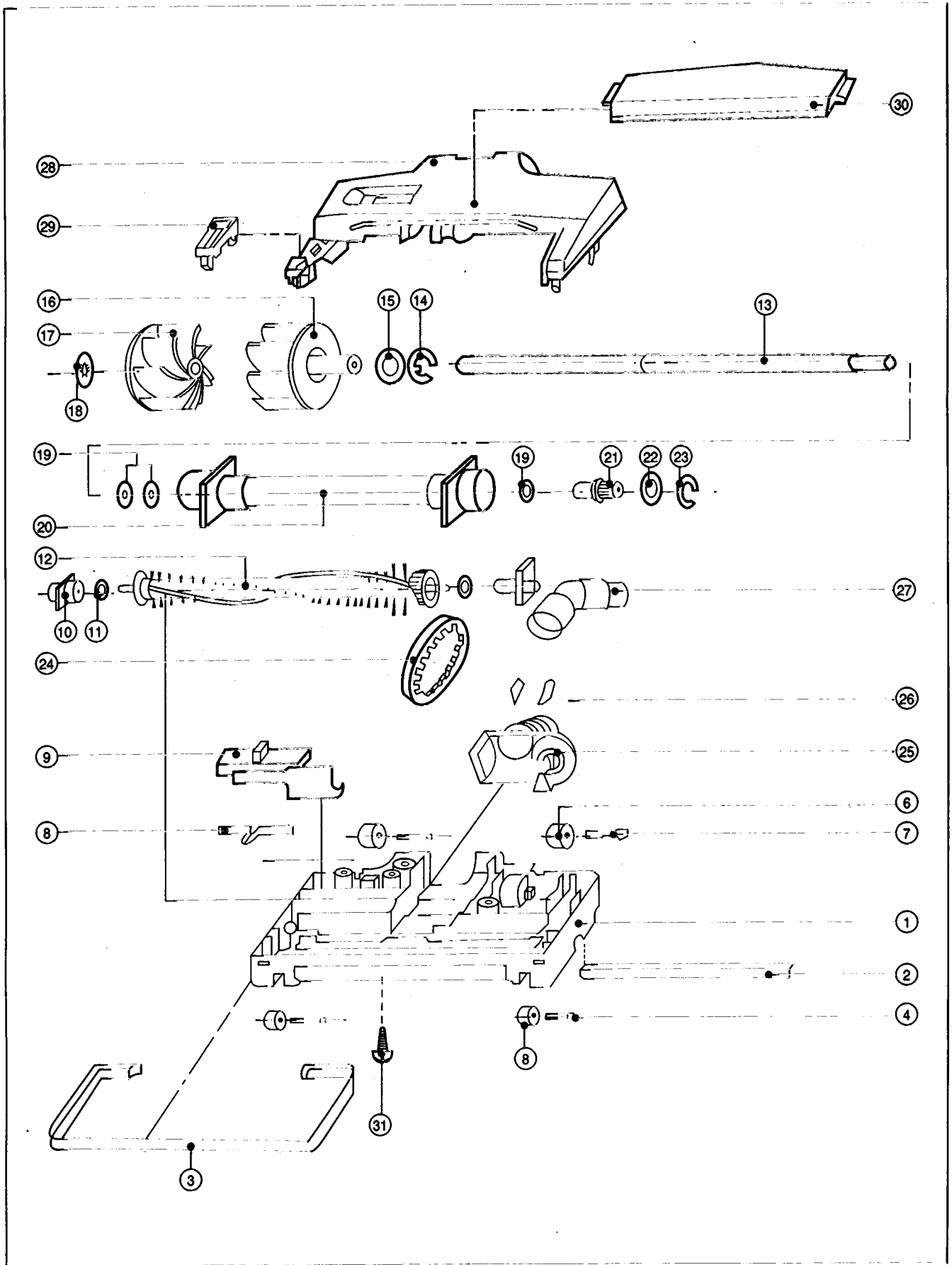
5. Suction Brush ass'y



SUCTION BRUSH PARTS LIST

NO.	PART NAME	PARTCORE	SPEC.	Q'TY	NOTE
1	BODY BRUSH	4560F90010	ABS	1	
2	COVER BRUSH	4560F90080	ABS	1	
3	ROLLER BRUSH	4560F90020	PP	2	
4	PIN ROLLER	4560F90110	SWRM	2	
5	ROLLER BRUSH	4560F90090	PP	2	
6	PIN ROLLER	4560F90120	SWRM	2	
7	HOLDER BRUSH AS	4568B91001	ASSY	1	
8	LEVER BRUSH	4560F90040	ABS	1	
9	SPRING	4568B90050	HSW3	2	
10	PIPE BRUSH	4560F90060	ABS	1	
11	NECK	4560F90070	ABS	1	
12	GASKET BRUSH	4560F90030	PVC-S	1	
13	HOOK	23823100100	POLY AMIDES	2	
14	SCREW TAPPING	7121201411	T2S PAN 4 x 14	4	

6. Turbo Brush Ass'y



SUCTION BRUSH PARTS LIST

NO.	PART NAME	PARTCORE	SPEC.	Q'TY	NOTE
1	BODY BRUSH	4565B60010	ABS	1	
2	FIX BRUSH AS	4565A61001	V/C	1	
3	RPROTECTOR BRUSH	4565A60110	PVC-S	1	
4	ROLLER BRUSH	3624700400	POM+PVC	2	
5	PIN ROLLER	3628200100	SWRM MFZN	2	
6	ROLLER BRUSH	4560F90090	PP	2	
7	PIN ROLLER	4565B60060	SWRM D4.0 L25 ZN8-C	2	
8	SPRING PLATE	4565B60070	SUS304	1	
9	LEVER BRUSH	4565B60100	ABS	1	
10	BEARING	4565B60140	6-NYLON	2	
11	WASHER SPECIAL	4565B60131	STEEL T0.3 ID4.3 OD8.0	2	
12	BRUSH TURN AS.	4565B63001	ASSY	1	
13	SHAFT TURBO	4565B62010	S45C D6.0	1	
14	RING E	7402005032	ER-5 SKFB	1	
15	WASHER PLAIN	7400506011	T1.0 ID6.5 OD11.5 MFZN	1	
16	TURBO LEFT	4565B62080	ABS	1	
17	TURBO RIGHT	4565B62090	ABS	1	
18	WASHER FIX	4565B62121	SK-5 T0.4	1	
19	WASHER VINYL	4565B62030	VINYL T0.5 ID6.2 OD9.5	2	
20	BEARING AS.	4565B62500	ASSY	1	
21	GEAR	4565B62040	POLY ACETAL	1	
22	WASHER FIBER	4565B2050	FIBER T0.5 ID5.3 OD11.0	1	
23	RING E	7402003032	ER-3 SKZN BLACK	1	
24	BELT	4565B60120	UNNITA 50055 W6.35	1	
25	NECK	4565B64011	ABS	1	
26	HOOK	3623100100	POLY AMIDE	2	
27	PIPE BRUSH	456ON64030	ABS	1	
28	COVER BURSH	4565B60150	ABS	1	
29	BUTTON BRUSH AUX.	4565B60171	ABS	1	
30	COVER BRUSH	4565B60160	ABS	1	
31	SCREW TAPPING	7121401611	T2S PAN 4 * 16 MFZN	4	