

# Service & repair hints of NOKIA 3210

Service & Analysis Center

0100 - 0100  
0100 - 0100  
0100 - 0100  
0100 - 0100  
0100 - 0100  
0100 - 0100  
0100 - 0100  
0100 - 0100  
0100 - 0100  
0100 - 0100

## Introduction

### IMPORTANT:

**This document is intended for use by authorized NOKIA service centers only.**

The purpose of this document is to provide some further service information for NOKIA 3210 phones.

It contains a lot of collected tips and hints, to find failures and repair solutions easily.

I will also give support to the inexperienced technicians.

Saving process time and improving the repair quality is the aim of using this document.

We have build it up based on fault symptoms (listed in "Contents") followed by detailed description for further analysis.

It is to be used additionally to the service manual and other service information

like Service Bulletins, for that reason it doesn't contain any circuit descriptions or schematics.

### **All measurements are made with using of following equipment:**

|                    |   |
|--------------------|---|
| Nokia repair SW    | : Wintesla Version 6.10                   |
| DLL version        | : NSE8/9 version 2.41.05                  |
| Nokia Module Jig   | : MJS-13                                  |
| Digital multimeter | : Fluke 73                                |
| Oscilloscope       | : Hitachi V-1565; Fluke PM 3380A          |
| Spectrum Analyzer  | : Advantest R3361C with an analogue probe |
| RF-Generator /     | : Rohde & Schwarz CMD 53                  |
| GSM Tester         |   |

While every endeavour has been made to ensure the accuracy of this document, some errors may exist. If any errors are found by the reader, NOKIA should be notified in writing, using following procedure:

#### **Please state:**

Title of the Document + Issue Number/Date of publication

Page(s) and/or Figure(s) in error

#### **Please send to:**

#### **Nokia GmbH**

Service & Analysis Center Europe

Meesmannstr.103

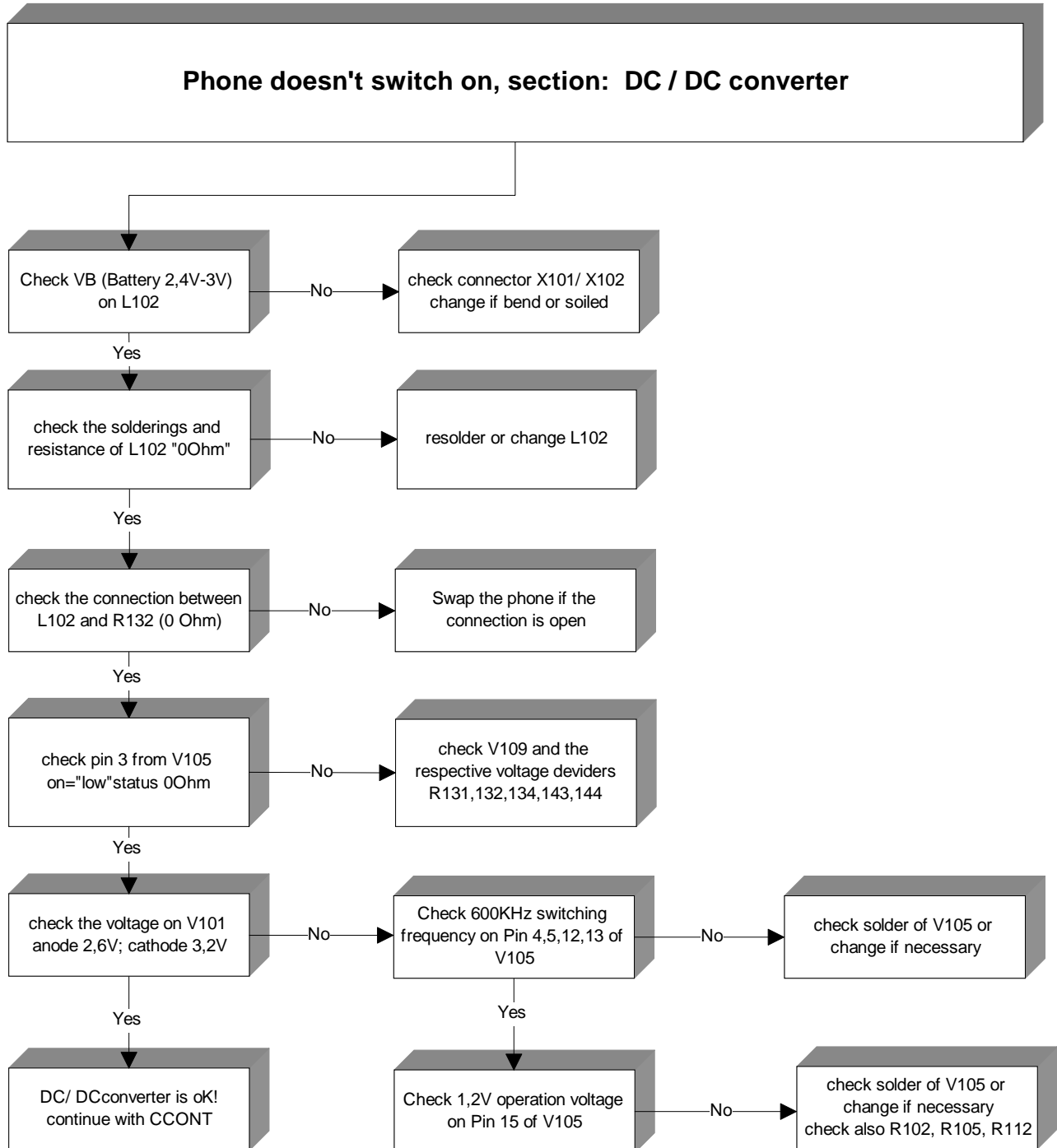
D-44807 Bochum / Germany

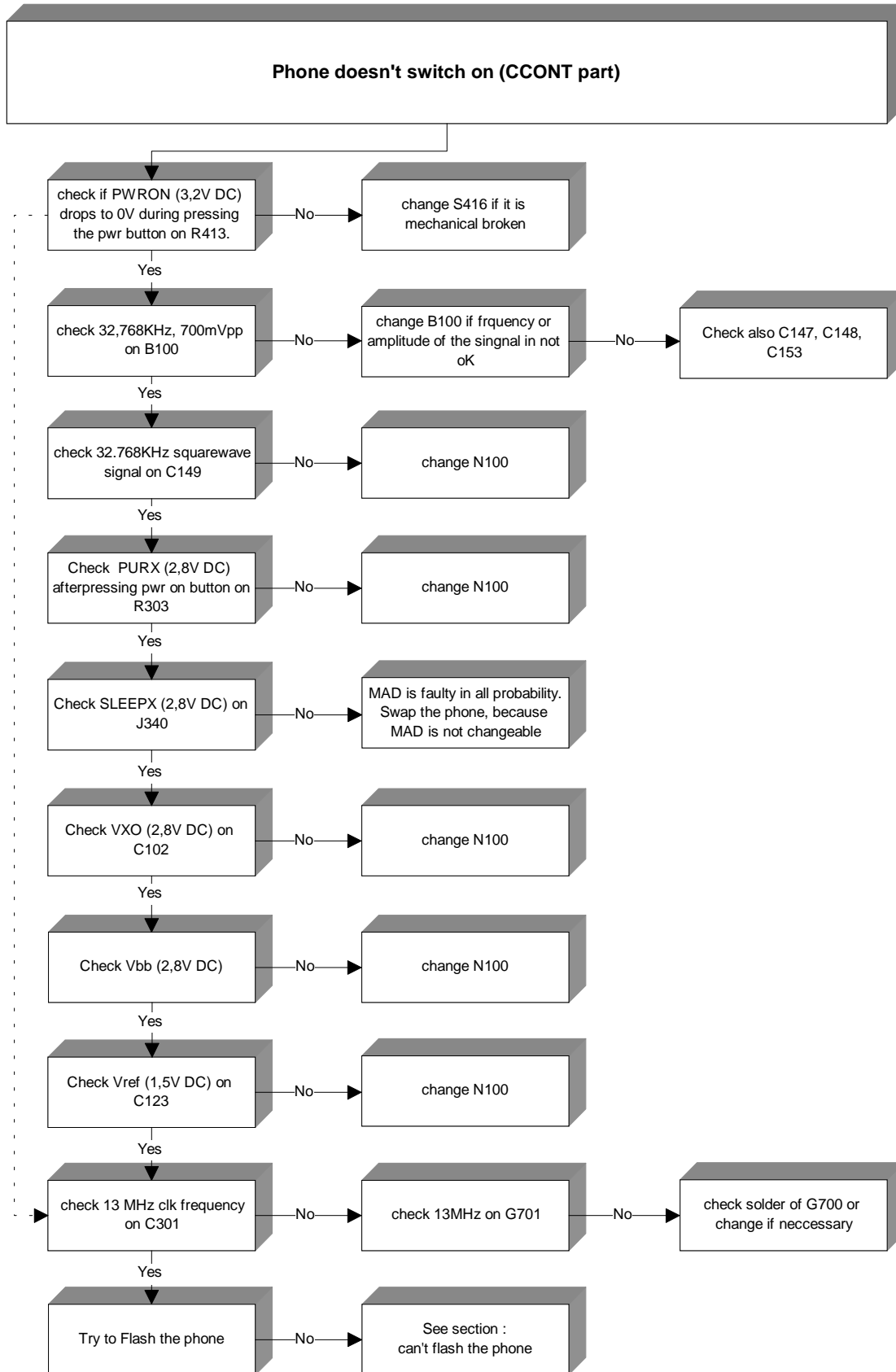
Email: [ams.sace-training@nokia.com](mailto:ams.sace-training@nokia.com)

Contents

|  |           |
|--|-----------|
| <b><u>INTRODUCTION</u></b>                               | <b>2</b>  |
| <b>DOESN'T SWITCH ON</b>                                 | <b>4</b>  |
| <b>NO FLASH UPDATE POSSIBLE/ DOESN'T SWITCH ON</b>       | <b>7</b>  |
| <b>INTERMITTENT DOESN'T SWITCH ON</b>                    | <b>8</b>  |
| <b>NOT CHARGING</b>                                      | <b>8</b>  |
| <b>LOW STAND BY TIME/ OPERATION TIME</b>                 | <b>11</b> |
| <b>PHONE SWITCH IT SELF OFF</b>                          | <b>13</b> |
| <b>CONTACT SERVICE COBBA PARALLEL /SERIAL BUS FAIL</b>   | <b>15</b> |
| <b>CONTACT SERVICE-CCONT INTERFACE FAIL</b>              | <b>17</b> |
| <b>CONTACT SERVICE – EEPROM CHECKSUM FAIL</b>            | <b>18</b> |
| <b>CLOCK TIME OR USER SETTINGS PROBLEMS</b>              | <b>19</b> |
| <b>BUZZER FAILURES</b>                                   | <b>20</b> |
| <b>INTERNAL AUDIO FAILURES</b>                           | <b>21</b> |
| <b>DISPLAY FAILURES</b>                                  | <b>23</b> |
| <b>KEYPAD FAILURE</b>                                    | <b>24</b> |
| <b>INSERT SIM CARD</b>                                   | <b>25</b> |
| <b>SIM CARD NOT ACCEPTED, SIM LOCK FAILURE</b>           | <b>26</b> |
| <b>PRODUCT CODE NSE-8</b>                                | <b>28</b> |
| <b>RECOMMENDATION FOR REPAIR ACTIONS IN THE RF- AREA</b> | <b>30</b> |
| <b>LOW RECEIVER SIGNAL STRENGTH INDICATOR</b>            | <b>30</b> |
| <b>NO SERVICE</b>  | <b>30</b> |
| <b>CALL BREAKS / NO SERVICE</b>                          | <b>33</b> |
| <b>NO TX-POWER OR TO LOW</b>                             | <b>34</b> |
| <b><u>MEASUREMENT POINTS NSE-8</u></b>                   | <b>37</b> |

Doesn't Switch on





Battery connectors X101/ X102 / bend out dirty

- Check if VBATT and Gnd are connected

Power on/off switch S416 faulty/ mechanical broken

- Check if 3,2V on R413 drops of 0V during pressing the Power on button

L102 poor soldering

- Check the soldering of L102
- Check the resistance in "off mode=0Ω"
- Resolder L102 or change it

N100 CCONT faulty

- Check if 3,2V on R413 drops of 0V during pressing the Power on button
- Check if there is a 32.768 kHz square wave on C149
- Check if PURX on R303 goes up to 2.8 V DC
- Check if VXO on C102 goes up to 2.8 V DC
- Check if VBB on C117 goes to 2,8V DC
- Check if Vref on C123 goes to 1,5V DC

B100 faulty 32,768KHz

- Check 32.768 KHz ; 700mVpp clock signal on B100
- Check also C147, C148, C153

G701 faulty 13 MHz

- Check VCC 2,8V DC on G701
- Check 13 MHz output frequency; 1,2 Vpp on the output pin

VB to R132 board faulty

- Check the battery voltage 2,6V on L102
- Check the same voltage on R132
- Check if the connection from R132 to L102 are 0Ω
- Don't forget to put the additional label on the PCB, it save the layer (see Service Bulletin 11)

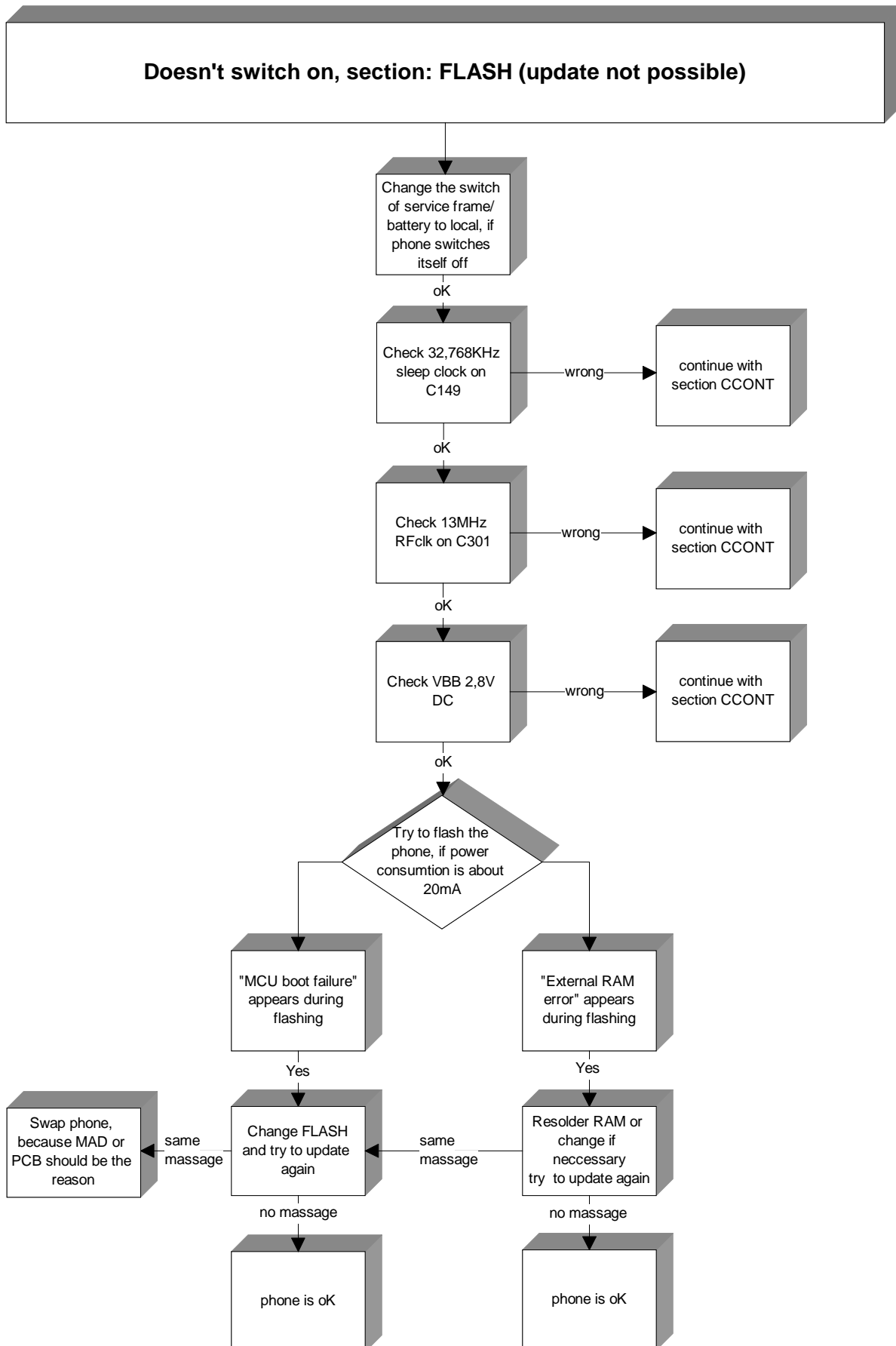
D200 MAD faulty

- Check if there is a 32,768 KHz square wave on C149
- Check the 13MHz main clock oscillator on C301 800mVpp
- Check VBB 2,8 V DC on C117
- Check PURX 2,8 V DC on R303 (comes from CCONT)
- Check SLEEPX 2,8 V DC On measurement point J 340
- MAD are probable faulty
- MAD are not interchangeable swap the handset

V105 DC/DC converter faulty

- Check the voltage difference on the diode V101 Anode: 2,6V DC, cathode: 3,2V DC
- Check the 600KHz switching frequency on pin 4, 5, 12, 13 from V105
- Check the 1,2V operation voltage on pin 15 from V105
- Check if pin 3 from V105 have low status ≈0V, if not check V109 and the respective voltage dividers R131, R132, R134, R143, R144
- Change the V105

No flash update possible/ Doesn't switch on



## D301 Flash faulty

- If the handset switches it self off, change the switch of the service frame to local mode
- Check the 32,768KHz Sleep clock signal on C149
- Check the 13MHz main clock oscillator on C301 800mVpp
- Check the VBB voltage on C117
- If power consumption is approximately 20mA try to flash the phone
- If you get a error message during the flashing process, change the flash and try it again

## D302 RAM faulty/ poor soldering

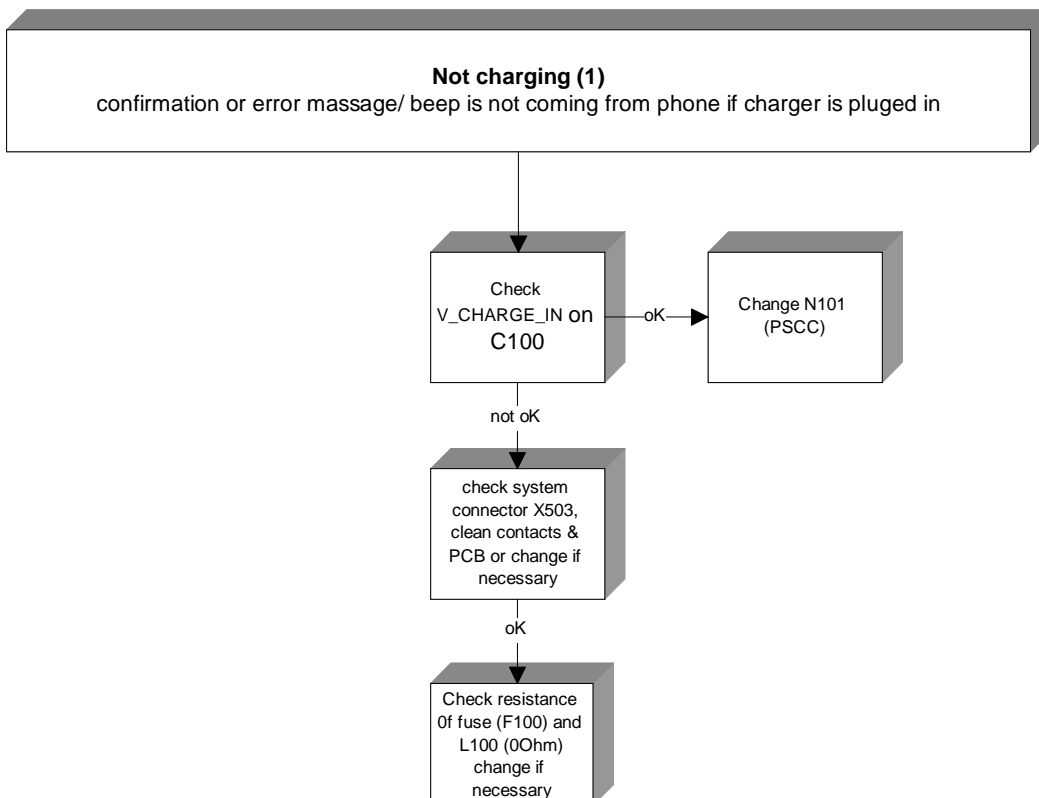
- Check if the handset current consumption is approx. 20mA
- Check the 32,768KHz Sleep clock signal on C149
- Check the 13MHz main clock oscillator on C301 800mVpp
- Check the VBB voltage on C117
- Resolder RAM
- Try to flash the handset
- Change the RAM if you get a error message during the flash procedure "[external RAM error](#)"

## Intermittent doesn't switch on

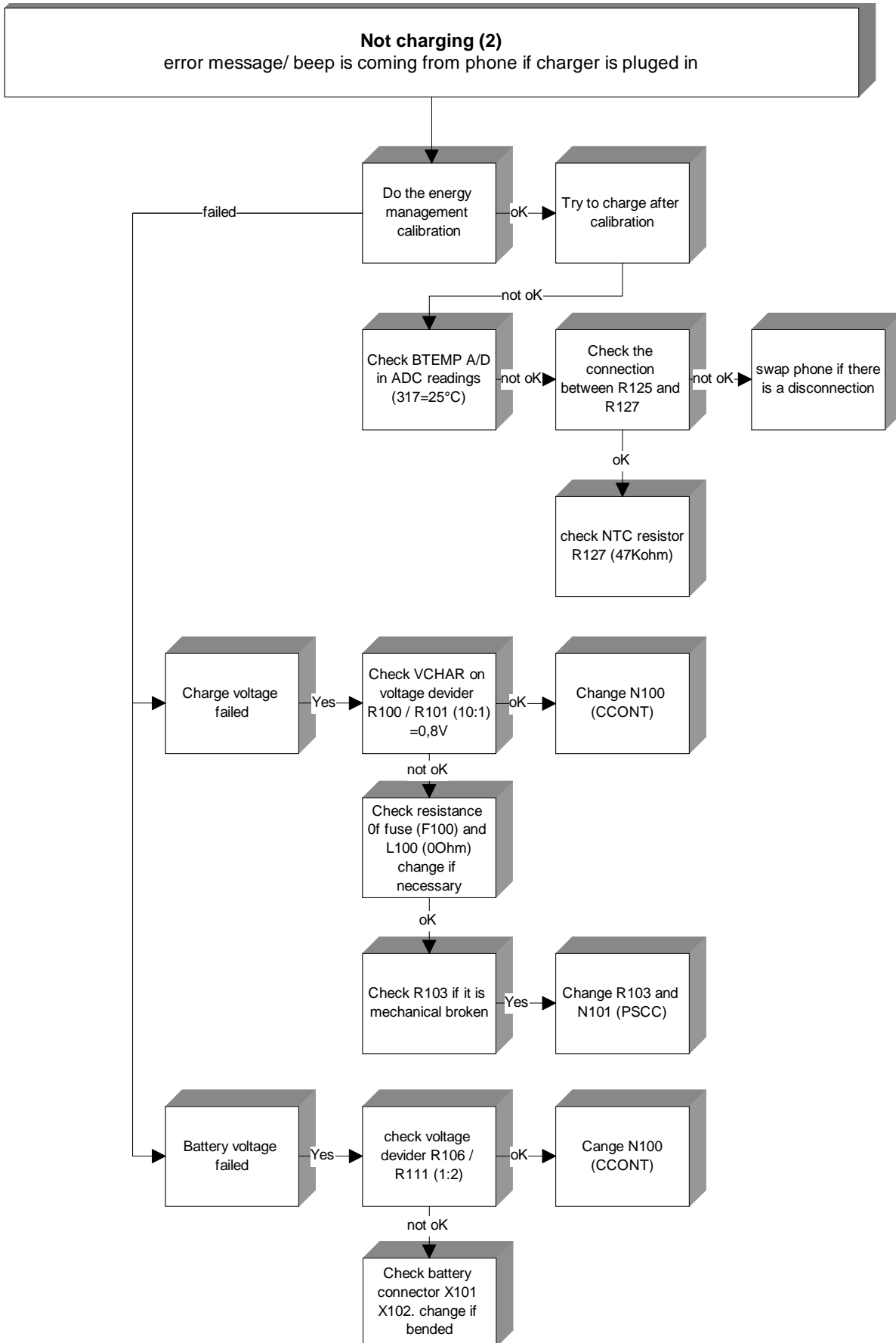
### D301 FLASH faulty

- Check if the handset switches on after reflashing the memory
- D301 Flash internal fail or poor soldering balls

## Not charging







If you are using wintesla NSE8/9 DLL 2.41.03 or lower version the error message "current calibration fail" will appear in every charge tuning calibration test! See Service manual chapter "service software instructions" page 19 (Energy Management Calibration)

X503 System connector faulty

- Check the mechanical appearance of the connector
- Clean the contacts on the board or change the connector if necessary

F100 faulty

- Check resistance of F100 (0Ω)
- Check the resistance V\_charge line to ground (OK=10KΩ)

N100 CCONT faulty/ poor soldering

- Check if any A/D values are out of limit but the corresponding DC voltages is OK ([wintesla/ local mode/ Testing/ ADC Readings...](#))
- If DC voltages are wrong, check corresponding voltage dividers (R100, R101)
- Check PWMOUT on R117 or R142 (1 Hz standard / 32 Hz fast)

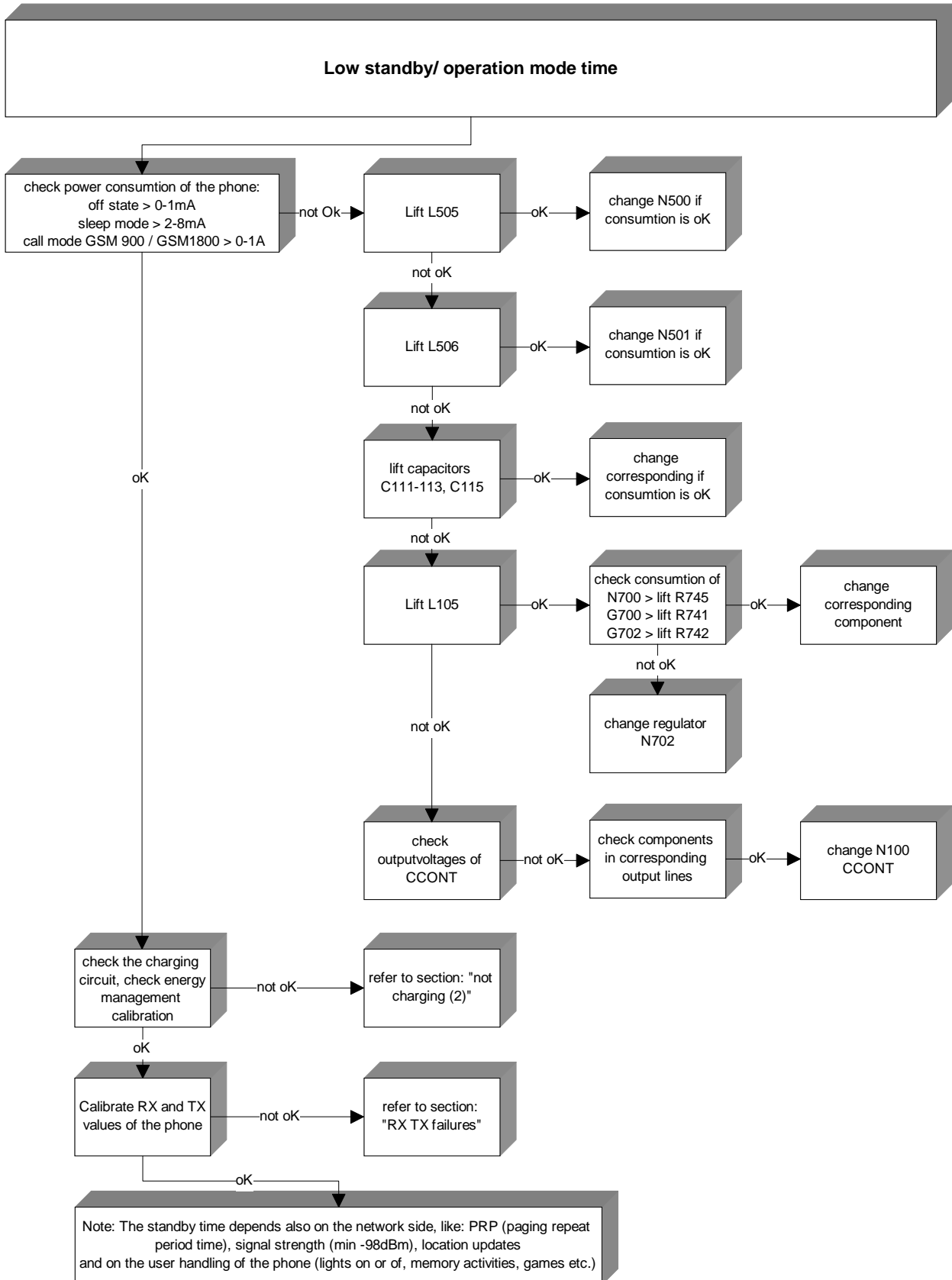
R103 broken and N101 PSCC electrical faulty

- Check if the handset doesn't charge with the ACP-9 fast charger
- Check the mechanical appearance of the varistor R103
- If it's broken change it, in this case change also N101 PSCC

R125 and R127 connection faulty

- Check if any A/D value is out of limit special [BTEMP \(317≅25°\)](#)
- Check the connection between R125 and R127
- Check the NTC resistor R127 47KΩ

Low stand by time/ operation time



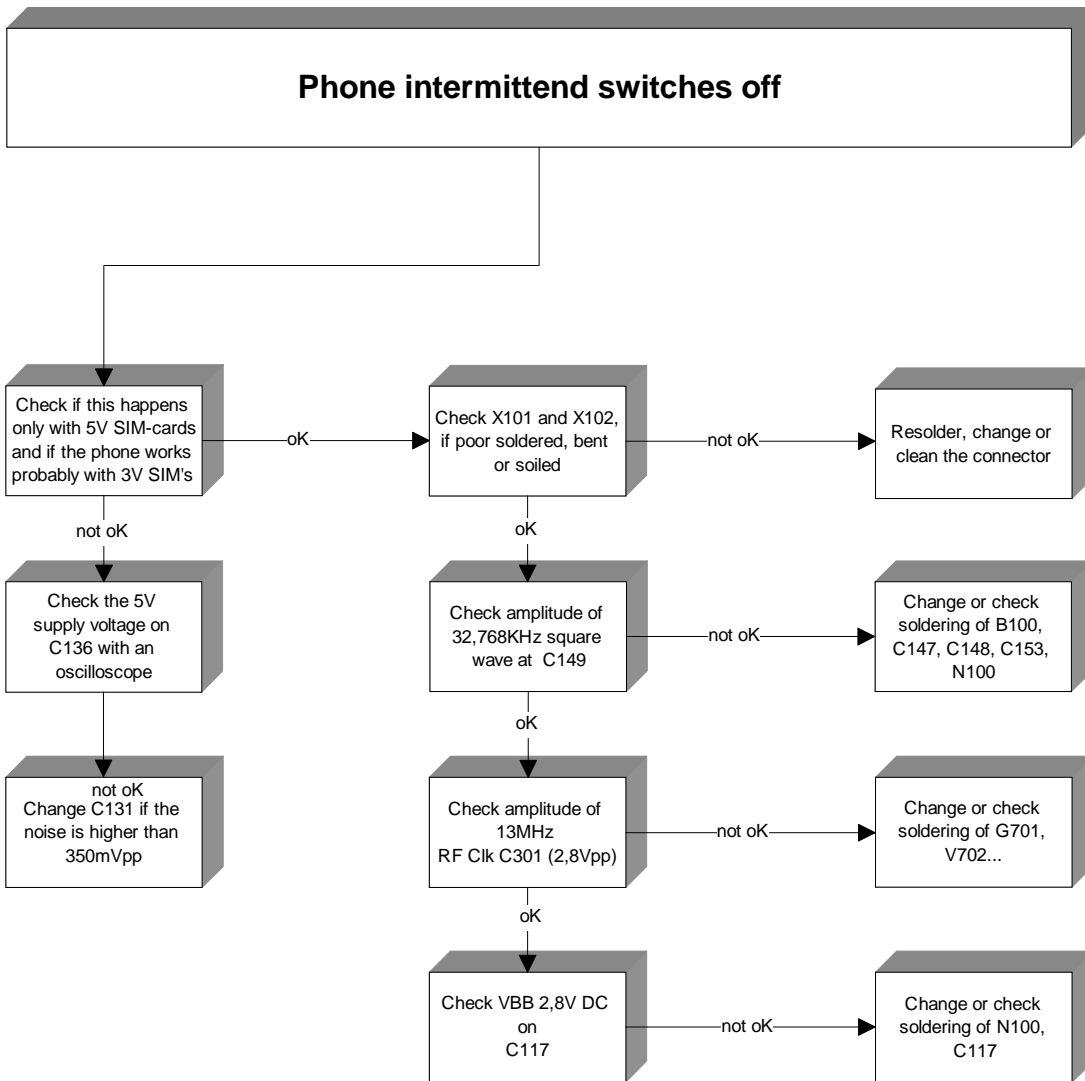
## C111, C115, C113 faulty

- Check the current consumption in different operation modes (refer to the table below)
- Check if the high current consumption comes from the VB, Vout or output voltages of CCONT
- Disconnect coil by coil L105 (→N702) L505, L506 (→PA's) and check consumption again
- Check and disolder C111, C115 and C113
- calibrate Battery value if charging stops to early or battery is to hot after charging (see also chapter "Not charging")

Figure 1: current consumption values

| Function mode      | Minimum current in mA | Maximum current in mA |
|--------------------|-----------------------|-----------------------|
| Off state          | 0                     | 1                     |
| Sleep mode         | 2                     | 8                     |
| Call mode GSM 900  | 0                     | 1000                  |
| Call mode GSM 1800 | 0                     | 1000                  |

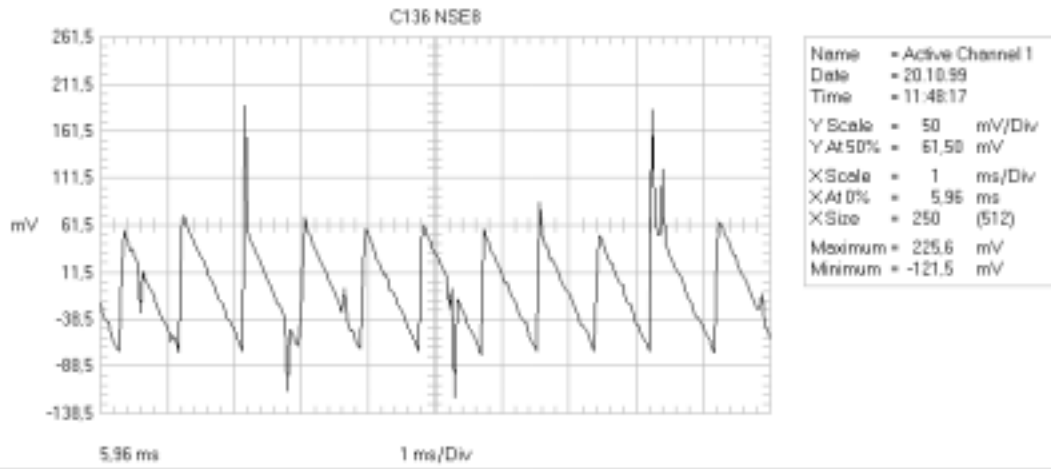
Phone switch it self off



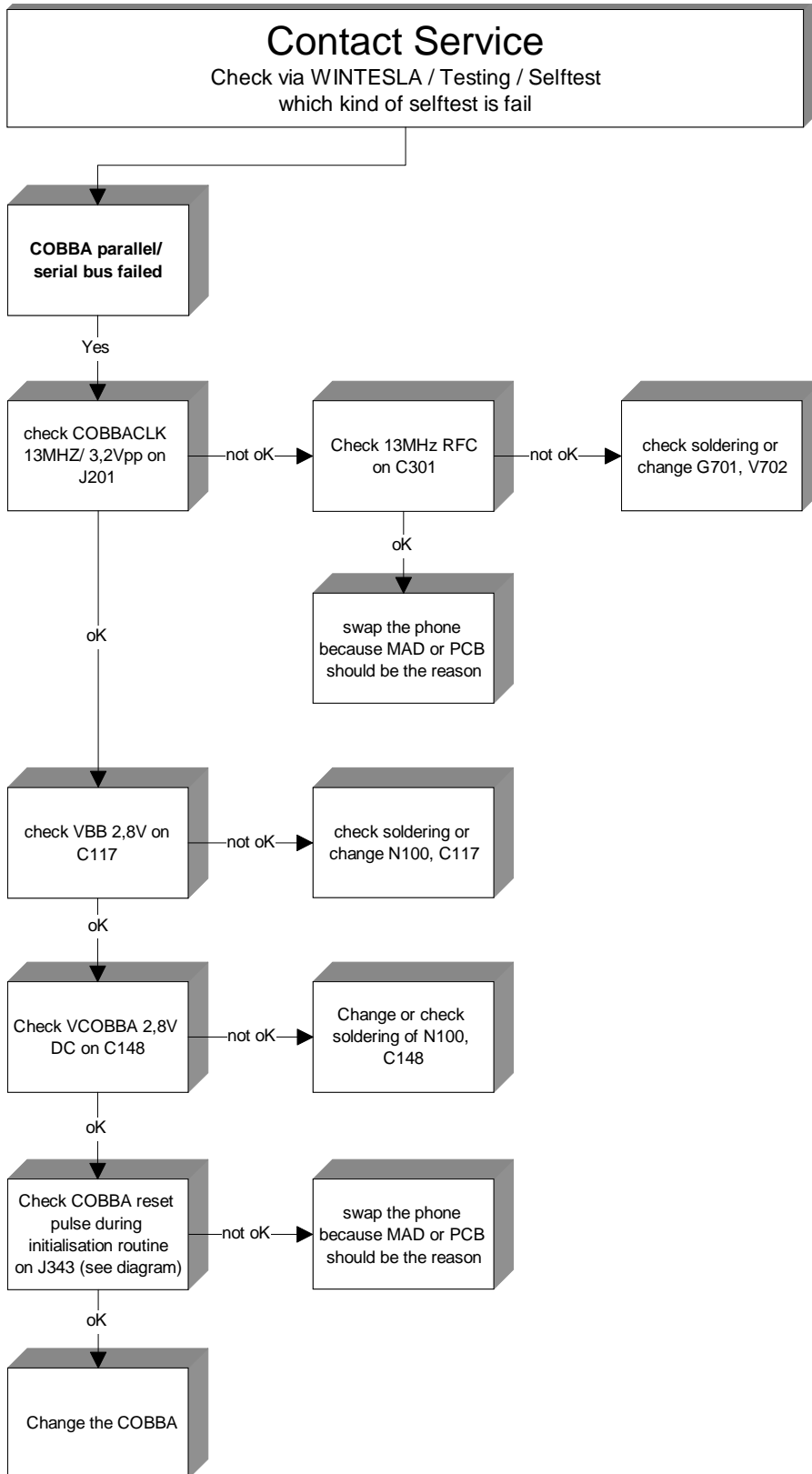
C136 10µF/10V

- Check, if the handset doesn't switch off with 3V SIM-Cards
- Check that the 5V VSIM voltage on the capacitor C136 is approximately 4,8V-5,2V with maximal 350mVpp noise overlap (view the diagram below)

Figure 2: Measurement point J343 COBBA RESET



Contact service COBBA parallel /serial bus fail



N200 COBBA faulty /solder balls broken

- Check VBB 2,8V DC on C117 near to CCONT
- Check VCOBBA 2,8V DC C148 near to COBBA
- Check COBBACKL 13MHz 3,2Vpp on J 201 (see the diagram below)
- Check COBBA reset impulse during the initialisation routine on J343 (see the diagram below)
- Change COBBA and write the IMEI and SIM-LOC DATA back to the phone
- If the error persist, the MAD or the Board should be the reason
- SWAP the handset because MAD is not changeable

Note! Rewrite SIMLOCK and IMEI entries with use of the Nokia security SW (SSSW) and make a SW-update or send this phones to the SACE, if this procedure is not permitted to you

Figure 3: 13MHz Clock signal for the COBBA

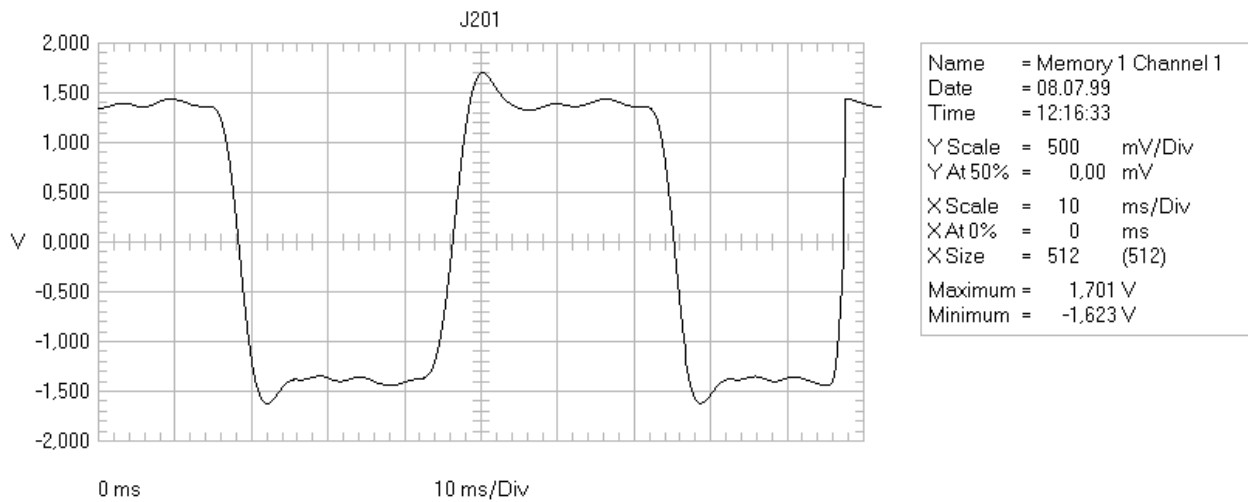
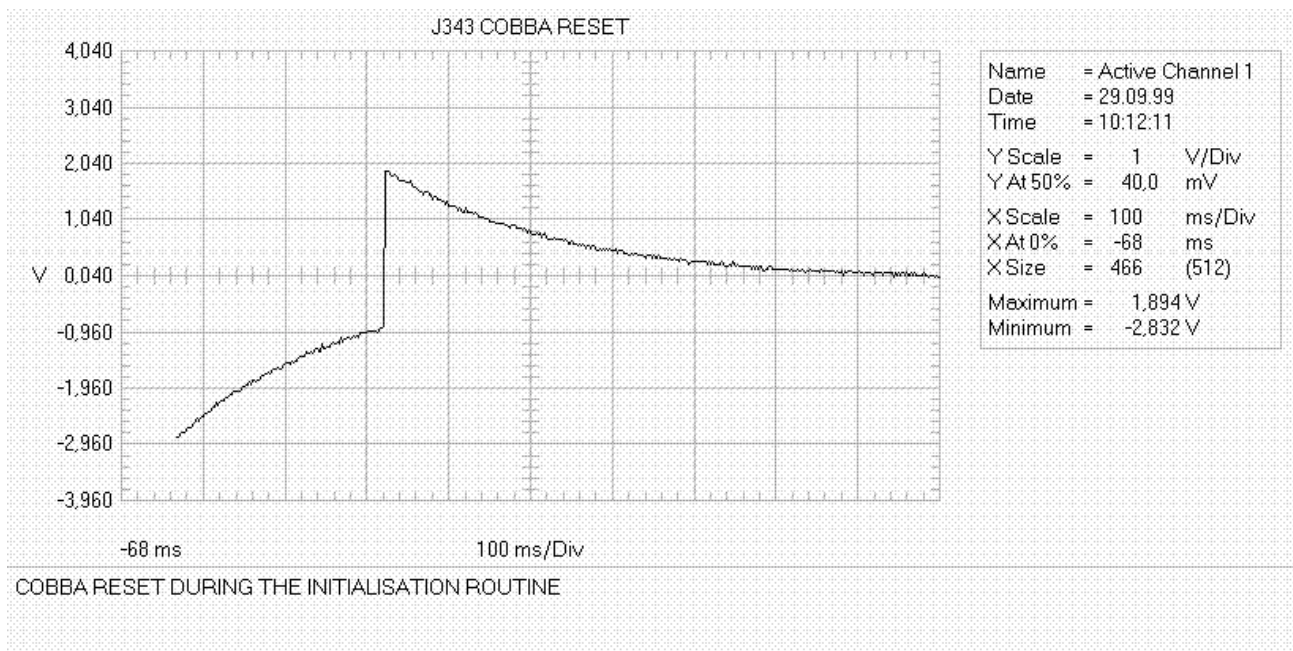
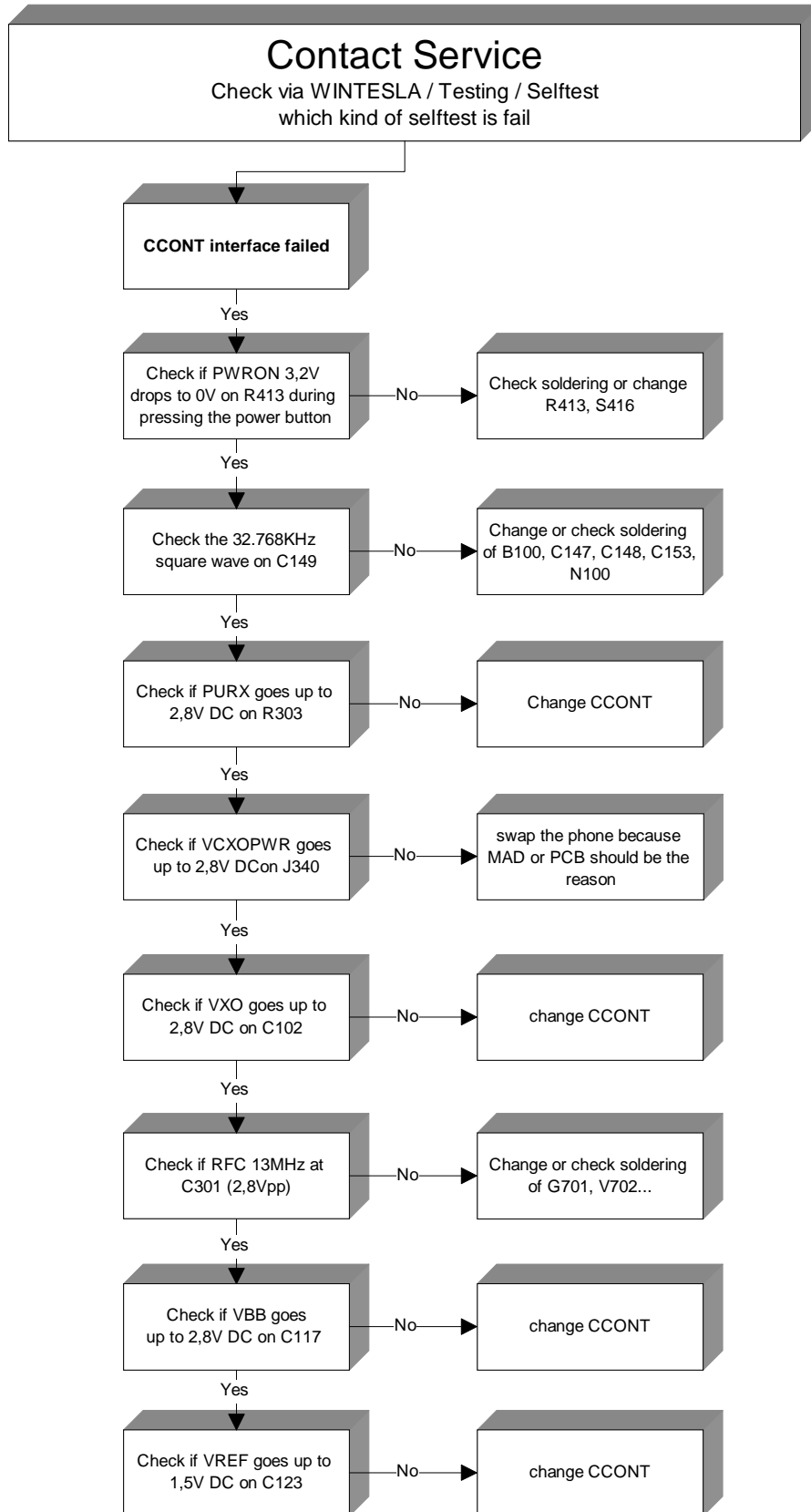


Figure 4 Measurement point J343 COBBA RESET





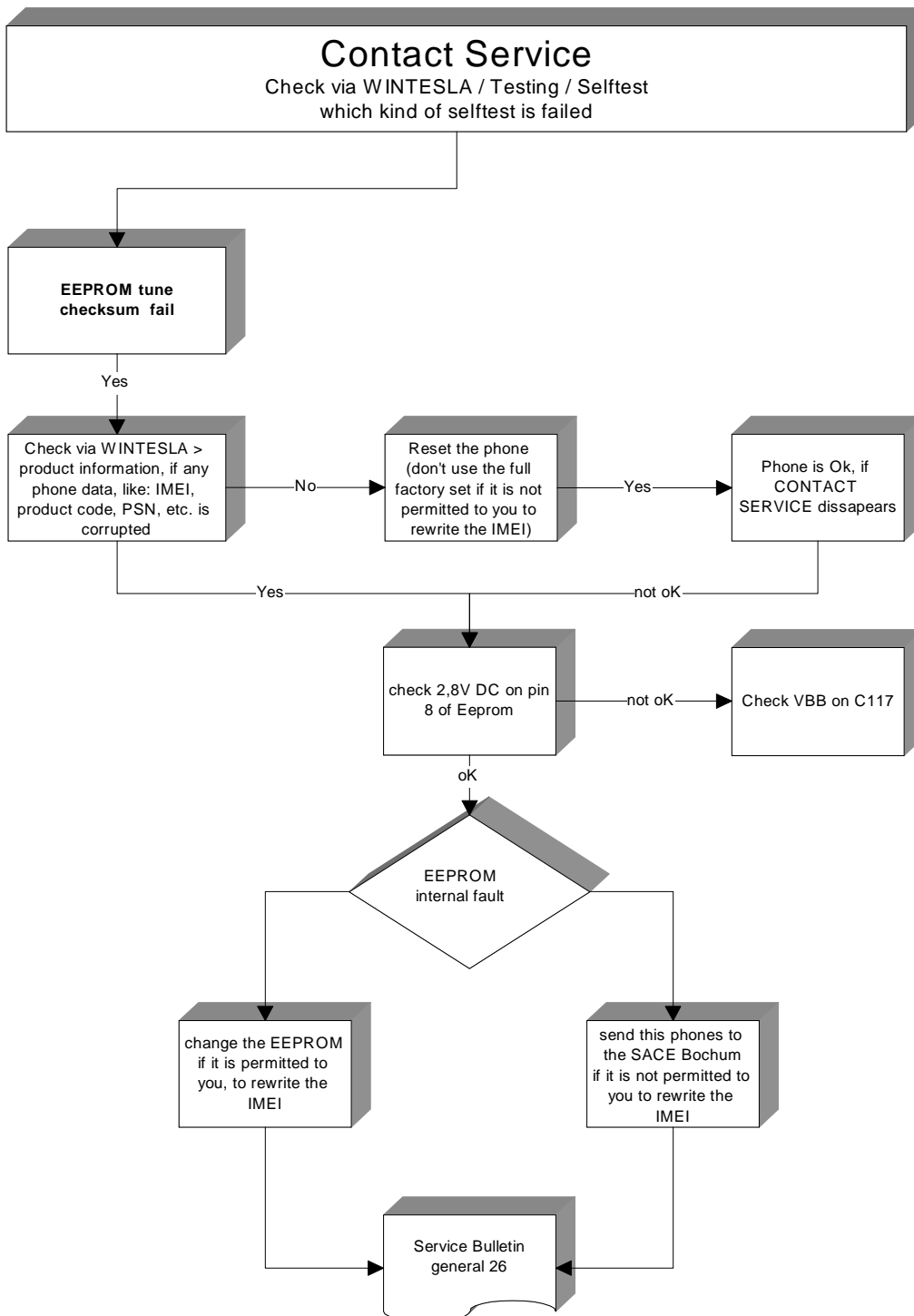
Contact Service-CCONT interface fail



N100 CCONT Faulty

- Check if 3,2V on R413 drops to 0V during pressing the Power on button
- Check if there is a 32.768 kHz square wave on C149
- Check if PURX on R303 goes up to 2.8 V DC
- Check if VXO on C102 goes up to 2.8 V DC
- Check if VBB on C117 goes to 2,8V DC
- Check if Vref on C123 goes to 1,5V DC
- Change the CCONT

Contact service – Eeprom checksum fail

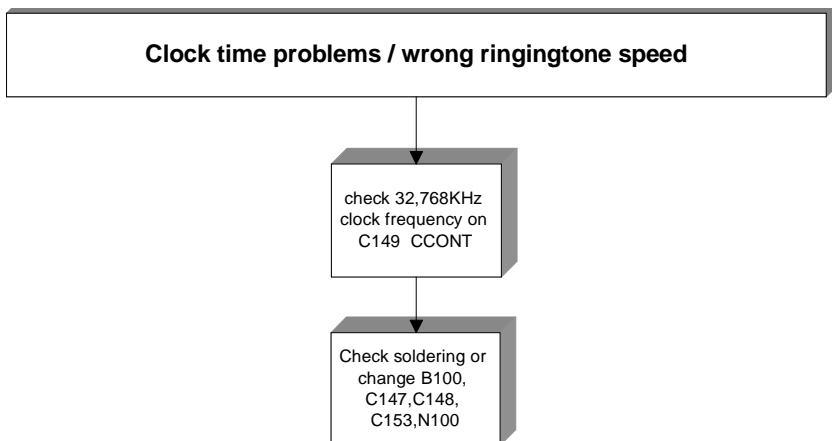


## D303 Eeprom faulty

- Check with wintesla if IMEI or product data are corrupted
- Check 2,8V DC on pin 8 of Eeprom
- Don't use the "Full factory set" with wintesla, otherwise the Original IMEI will be change to "65656565..."
- Change the Eeprom if it's permitted to you and write all ID data (IMEI, product code...) back
- If you aren't allowed to change the Eeprom and the IMEI is missing, write a note with a little comment, and send it together with the phone to the SACE

Note! Rewrite SIMLOCK and IMEI entries with use of the Nokia security SW (SSSW) and make a SW-update or send this phones to the SACE, if this procedure is not permitted to you

## Clock time or user settings problems

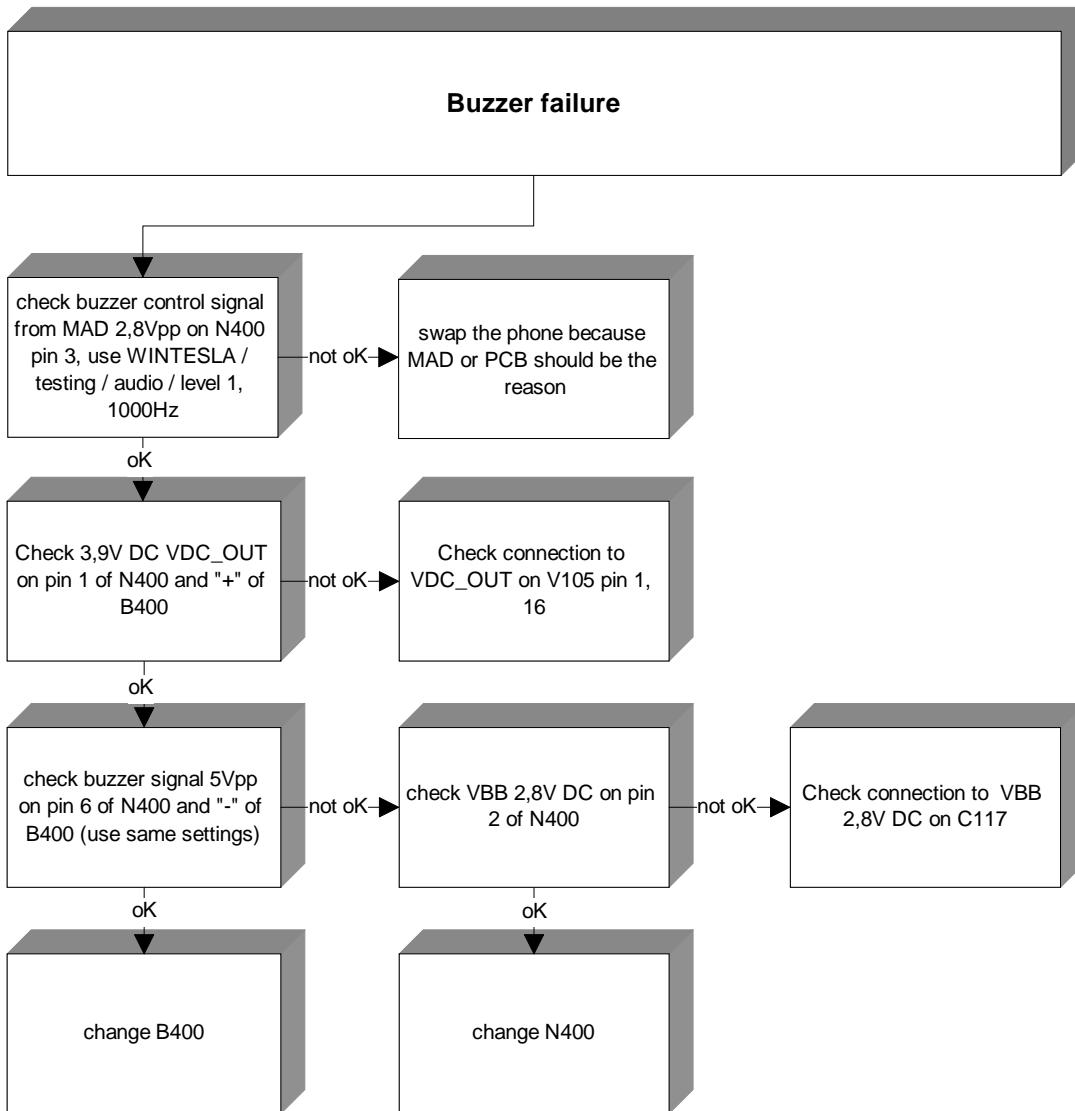


### Clock time / Ringing tone is to fast or to slowly

#### 32,786KHz Sleep oscillator B100

- Check that the sleepclk 32.768KHz square wave frequency on pin C149 isn't higher or lower
- Check the crystal B100, C147, C148, C153, N100
- View also the Service Bulletin 017 (capacitors C148, C153 change the value)

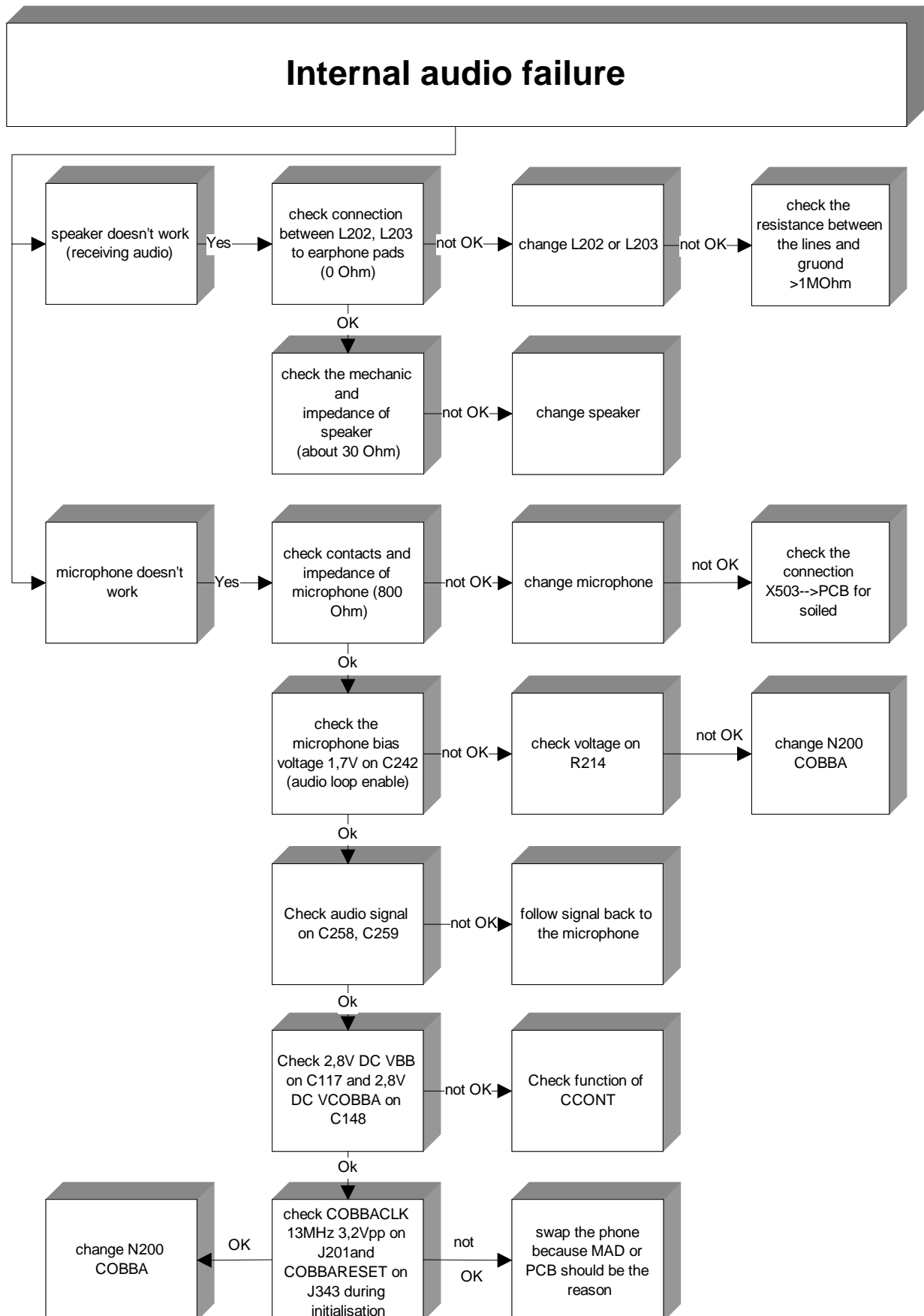
Buzzer failures



B400 / board connections broken

- Check the buzzer control signal from the MAD on pin 3 of N400 2,8Vpp 1KHz (use [WINTESLA / testing / audio Level 1, 1000Hz](#))
- Check VDC\_OUT 3,9V DC pin 1 N400 and "+" of buzzer
- Check VBB 2,8V DC on pin 2 N400
- Check the buzzer Signal on "-" of buzzer ≈ 5Vpp 1KHz
- Check the board connection pin 6 of N400 to "-" of buzzer
- Change the buzzer

Internal audio failures



## L202, L203 faulty

- Check resistance from L202, L203 to the earphone pads normal  $0\Omega$
- Check the resistance also from L202,L203 to ground and between both lines (normal high resistance  $>1M\Omega$ )

## Speaker

No / quiet / distorted receiving audio signal

- Check the mechanic of speaker, contacts, membrane, soiling
- Check resistance of speaker (about  $30\Omega$ )

## Microphone

No / quiet / distorted transmitting audio signal

- Check contacts of microphone  
Check resistance of microphone (about  $800\Omega$ )
- Check the microphone voltage 1,7V DC on C242 ([wintesla/ Testing/ Audio/ internal/ Loop on](#))
- Check the audio signal on C258 and C259

## X503

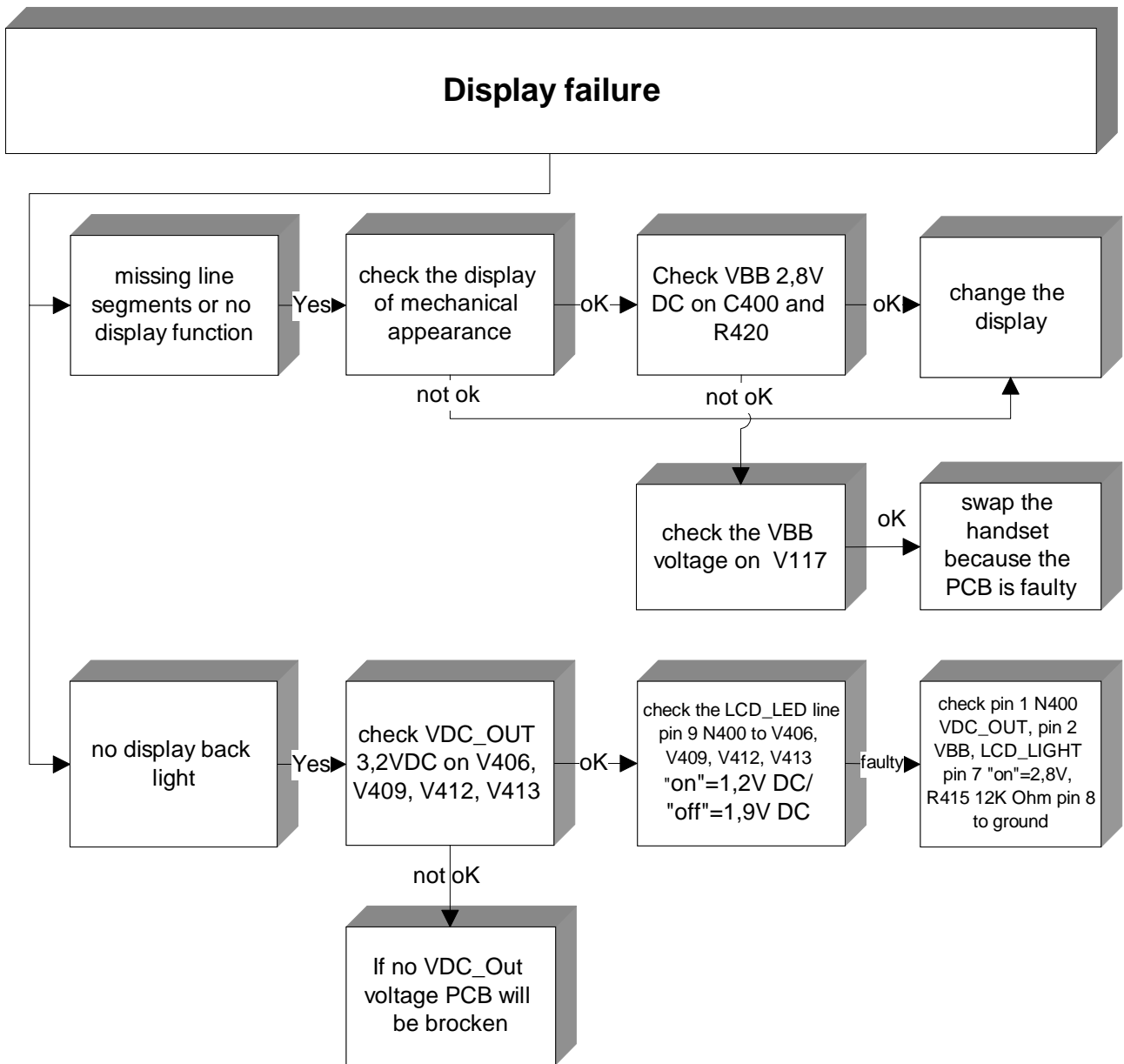
- Check microphone spring contacts
- Check spring contacts to the board (change connector if bent)
- Clean the contact pads on the board

## N200 COBBA faulty

- Check VBB 2,8V DC on C117 near to CCONT
- Check VCOBBA 2,8V DC C148 near to COBBA
- Check COBBACKL 13MHz 3,2Vpp on J 201
- Check COBBA reset impulse during the initialisation routine on J343 (see the diagram "CONBBA RESET")
- Change COBBA and write the IMEI and SIM-LOC DATA back to the phone
- If the error persist the MAD or the Board (PCB) should be the reason
- SWAP the handset because MAD is not changeable

Note! Rewrite SIMLOCK and IMEI entries with use of the Nokia security SW (SSSW) and make a SW-update or send this phones to the SACE, if this procedure is not permitted to you

Display failures



Black lines on the display or no display function

- Check if the display have some mechanical breaks around the corners
- Check VBB 2,8V DC on C400 and R420
- Change the Display

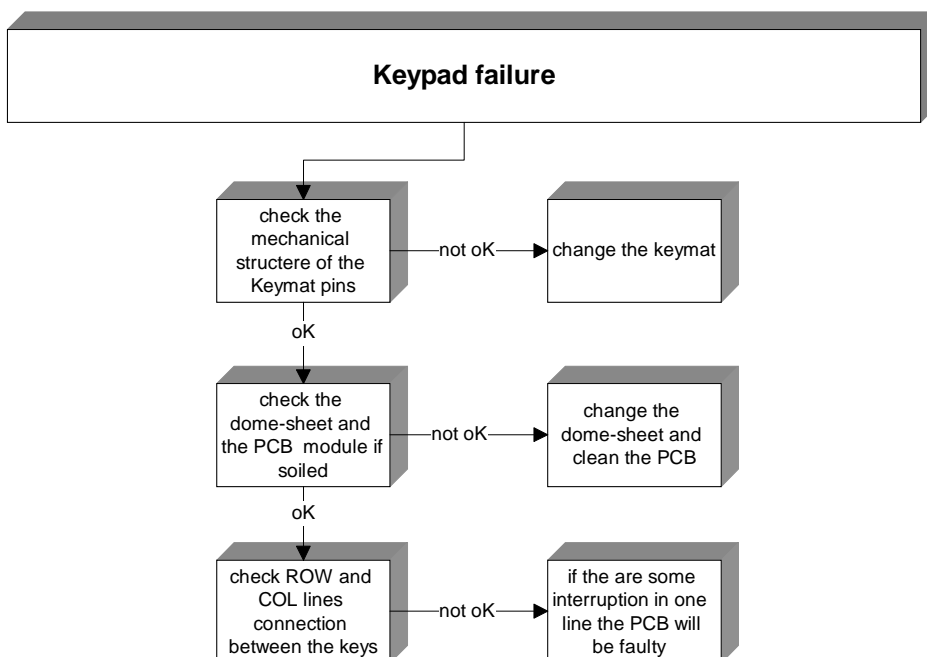
Figure 5: Faulty display



No display back light

- Check VDC\_OUT 3,2V DC on V406, V409, V412, V413
- Check the LCD line pin 9 of N400 and cathode of V406, V409, V412, V413 Light "on"=1,2V DC ; "off"=1,9V DC. ([Use Wintesla/ Testing/ userinterface/ 1.Test Pattern "on"](#))
- Check the LCD\_light enable line on pin 7 / N400, LCD\_LIGHT "on"=2,8V DC
- Check the resistor R415 12KΩ pin 8 / N400 to ground

Keypad failure





Keymat mechanical faulty

- Check the bottom of the keymat if no pins are broken or mechanical damaged

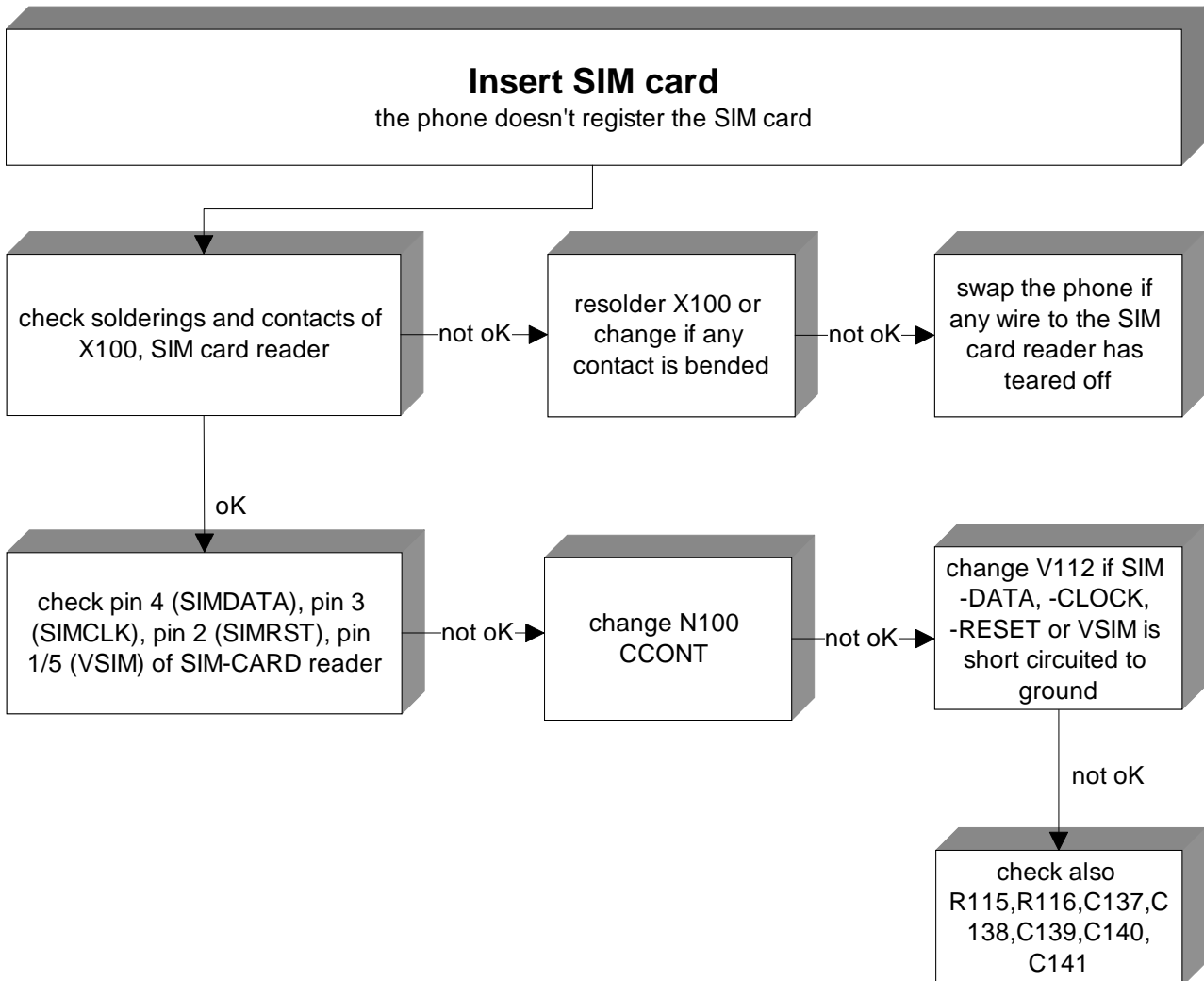
Board / Dome-sheet soiled

- If there are only one or two keys without function, check and clean the board and dome-sheet if soiled

Board failure

- If there are four keys without function and all of them are on them same ROW or COL line, check the connections between the keys and ground
- If any line is interrupted between the Keys, swap the handset because PCB is faulty

**Insert SIM CARD**



## X100, SIM card reader

- Check soldering
- Check contacts (change connector if bent)

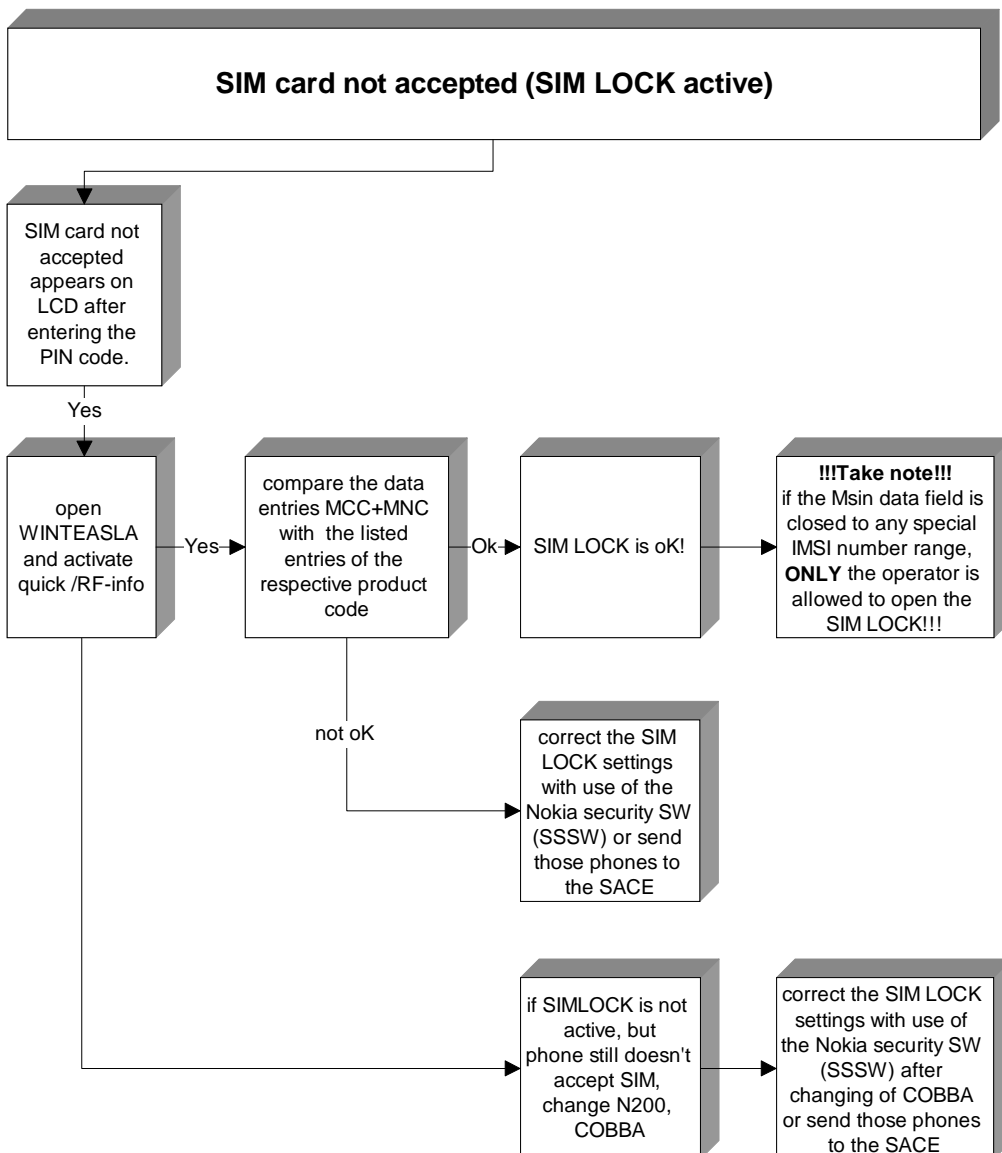
## N100, CCONT

- Check SIM card -DATA ( Pin 4 SC-reader), -Clock 3,25MHz (Pin 3 SC-reader), -Reset (Pin 2 SC-reader) and VSIM 3V/5V DC (Pin 1/5 SC-reader) depends to the SIM card

## V112

- Change component if SIM -DATA, -Clock, -Reset or VSIM is short circuited to ground
- Check also R115, R116, C137, C138, C139, C140, C141 for short circuit or not capacity

## SIM card not accepted, SIM LOCK failure



- If message "SIM Card not accepted" appears on LCD after entering PIN code, a SIM LOCK is probably activated in this phone
- Or COBBA has been changed and not reprogrammed with the SIM-LOC DATA
- Initialise phone into [normal mode](#) and activate [Quick/ RF-info \(WINTESLA\)](#)  
compare the SIM LOCK entries with the references from the operator. *Look at Figure: List of current SIM-LOC...*

#### N100, CCONT

- Refer to insert SIM Card procedure

#### N200, COBBA

- Change COBBA if all SIM LOCK entries and SIM-CARD signals from CCONT are OK

Note! Rewrite SIMLOCK and IMEI entries with use of the Nokia security SW (SSSW) and make a SW-update or send this phones to the SACE, if this procedure is not permitted to you

**Product Code NSE-8**

Figure 6: List of current SIM LOC phones NSE-8

| <b>Product-Code<br/>NSE-8</b>  | <b>SIM-LOCK-DATA</b>              | <b>Operator</b> |
|--|-----------------------------------|-----------------|
| 0503478  | Mcc+Mnc 20820<br>Msin ??????????  | BOUYGUES        |
| 0503566  | Mcc+Mnc 20210<br>Msin 99????????? | TELESTET        |
| 0503565  | Mcc+Mnc 20205<br>Msin 90????????? | PANAFON         |
| 0503564  | Mcc+Mnc 20201<br>Msin 1?????????  | COSMOTE         |
| 0503567  | Mcc+Mnc 23830<br>Msin ??????????  | MOBILIX         |
| 0503298, 0503299   | Mcc+Mnc 20801<br>Msin ??????????  | OLA             |
| 0503593  | Mcc+Mnc 26001<br>Msin ??????????  | POLKOMTEL       |
| 0503594, 0505102   | Mcc+Mnc 26801<br>Msin ??????????  | TELECEL         |
| 0503575  | Mcc+Mnc 21630<br>Msin ??????????  | WESTEL          |
| 0503576  | Mcc+Mnc 21601<br>Msin ??????????  | PANNON          |
| 0505105  | Mcc+Mnc 26002<br>Msin ??????????  | ERA             |
| 0505100  | Mcc+Mnc 23433<br>Msin ??????????  | ORANGE          |
| 0505101  | Mcc+Mnc 23430<br>Msin ??????????  | ONE2ONE         |
| 0505107  | Mcc+Mnc 28601<br>Msin ??????????  | TURKCEL         |
| 0505108  | Mcc+Mnc 28602<br>Msin ??????????  | TELSIM          |
| 0505104  | Mcc+Mnc 26003<br>Msin ??????????  | CENTERTEL       |
| 0505110  | Mcc+Mnc 27201<br>Msin ??????????  | EIRCEL          |
| 0502159, 0502993,<br>0502994, 0503161<br>0503207, 0503286,<br>0503287, 0503288<br>0503583, 0505106,<br>0505112, 0503789<br>0503824 | NO SIM-LOCK                       |                 |

| <b>Product-Code<br/>NSE-8</b> | <b>SIM-LOCK-DATA</b>             | <b>Operator</b>              |
|-------------------------------|----------------------------------|------------------------------|
| 0505109                       | Mcc+Mnc 23203<br>Msin ?????????? | Maxmobil                     |
| 0505111                       | Mcc+Mnc 65510<br>Msin ?????????? | MTN, South Africa            |
| 0503708                       | Mcc+Mnc 23002<br>Msin ?????????? | Eurotel, Czech Rep.          |
| 0503706                       | Mcc+Mnc 20416<br>Msin ?????????? | BEN, Netherlands             |
| 0503707                       | Mcc+Mnc 26806<br>Msin ?????????? | TMN, Portugal                |
| 0503785                       | Mcc+Mnc 23102<br>Msin ?????????? | Mobilkom-A1, Austria         |
| 0503788                       | Mcc+Mnc 20420<br>Msin ?????????? | Duchtone, Netherlands        |
| 0503825                       | Mcc+Mnc 23002<br>Msin ?????????? | Eurotel-Contract, Czech Rep. |
| 0503826                       | Mcc+Mnc 22601<br>Msin ?????????? | Connex                       |
| 0503827                       | Mcc+Mnc 20412<br>Msin ?????????? | Telfor, Netherlands          |
|                               | Mcc+Mnc<br>Msin ??????????       |                              |
|                               | Mcc+Mnc<br>Msin ??????????       |                              |
|                               | Mcc+Mnc<br>Msin ??????????       |                              |
|                               | Mcc+Mnc<br>Msin ??????????       |                              |
|                               | Mcc+Mnc<br>Msin ??????????       |                              |
|                               | Mcc+Mnc<br>Msin ??????????       |                              |
|                               | Mcc+Mnc<br>Msin ??????????       |                              |
|                               | Mcc+Mnc<br>Msin ??????????       |                              |
|                               | Mcc+Mnc<br>Msin ??????????       |                              |

## Recommendation for repair actions in the RF- area

To prevent some additional faults please take care of following recommendations for repairing the RF-area

- Don't use so much flux that it will go through the board and soiled the keyboard area
- Clean after every repair time the rest of the flux from PCB
- Don't make any loose wiring connection on the board
- To change some components it is necessary to remove the shield from the PCB, use matching nozzles for the solder machine. Don't cut it partially and solder the "old" part back or make some unqualified work
- Use a new shield after removing

## Low receiver signal strength indicator

Antenna faulty / wrong – Tuning

- Check the fixed position of the antenna, *don't touch the conducting area with the fingers*
- Check the antenna spring connector X501, change it if bent
- Check the receiver signal indicator with a new antenna
- Retune the handset

## No Service

Set first the RF-Generator to a high RF-Level output e.g. –40dBm

Set the module with wintesla as follow mode: Initialise/ Local mode/ Testing/ RF Controls.../ Active unit "RX"/ Operation Mode "continuous"

13MHz VCTCXO G701 out of range

- Check the 13MHz reference frequency pin 15 N700 (SUMMA) or pin 2 of G750, a frequency error higher +-50Hz can create deviation of the Intermediate frequencies
- View also SB 18 "The old version 'A' VCTCXO (type number: NGK3092A) should be replaced with a new version 'B' VCTCXO (type number: NGK3092B)"

No RX (no Rx calibration...RSSI reading highest value)

N600 CRFU / faulty / poor soldering

- Check the incoming RF- Channel frequency on pin 27 N600
- Check the LNA\_AGC voltage 2,8V DC pin 28 N600
- Check the VRX\_1 voltage 2,8V pin 15,16,23, 33, 38,45,46 N600
- Check the LNA\_OUT frequency pin 23 N600 and input on pin 18, 19.  
An attenuation from aprox. 10–15dBm between signal input and output is normal!
- Check the UHF LO frequency (2036MHz GSM900 CH60) pin 3 N600 approx. –20dBm.  
No frequency deviations are allowed!
- Check the outgoing 71MHz Intermediate Frequency on pin 15, 16 N600
- Check the soldering of N600 or change it

Z700 / faulty / poor soldering

- Check the 71MHz IF frequency on Z700. The normal attenuation between input and output are ≈15dBm
- Check the components C701, C704,C149, L701, R701 if the signal amplitude is different between the two lines
- check the soldering of Z700 or change it

### Z701 faulty / poor soldering

- check the outgoing 13MHz IF on pin 30 N700 (SUMMA)
- check the input 13MHz IF on pin 25, 26 N700 (SUMMA) . The attenuation between input and output is  $\approx 20\text{dBm}$
- check the 13MHz IF on Z701, around 5dBm attenuation between signal-in and signal-out
- check the soldering of Z701 or change it
- check R717, R718, R719, C706 and the line resistance to ground ( $10\text{K}\Omega$  with all components)

### G700 UHF Oscillator faulty

- check the UHF frequency on G700 for high spurious or deviation
- check the UHF-VC on pin 21 N700 1,9V-3.2V DC depending of the channel
- check the 5V VCP supply voltage on pin 13, 22 from N700 SUMMA
- check R733  $33\text{K}\Omega$ , R730  $5\text{K}\Omega$ , R731  $2\text{K}\Omega$ , C740  $2,2\text{nF}$
- change the oscillator

### N700 SUMMA faulty / poor soldering

- check the 13MHz reference frequency pin 15 N700. (No frequency deviation higher  $\pm 50\text{Hz}$  is allowed!)
- check the power supply voltage VRX\_2 2,8V DC pin 35 N600
- check the incoming IF 71MHz pin 37,38 N700
- check the 13MHz IF on pin 30(out),25, 26(in) N700 . The attenuation between input and output are  $\approx 20\text{dBm}$
- check the control-lines for the PLL pin 5, 6, 7 from N700 (see the diagrams below)
- check the incoming VHF\_LO frequency 464MHz pin 8 N700 if the 13MHz IF are deviated or not exist measurable level approximate  $-20\text{dBm}$ !
- Check the synth. power supply 2,8V DC pin 9, 19 N700 and VCC G700, G702
- Check the VCP 5V DC pin 13, 22 N700
- Check the control voltage for the UHF and VHF oscillator (UHF pin 21 control voltage is channel dependent, pin12 2,2V DC on N700)
- Check the soldering of N700 or change it

Figure 7: PLL-SCKL Signal

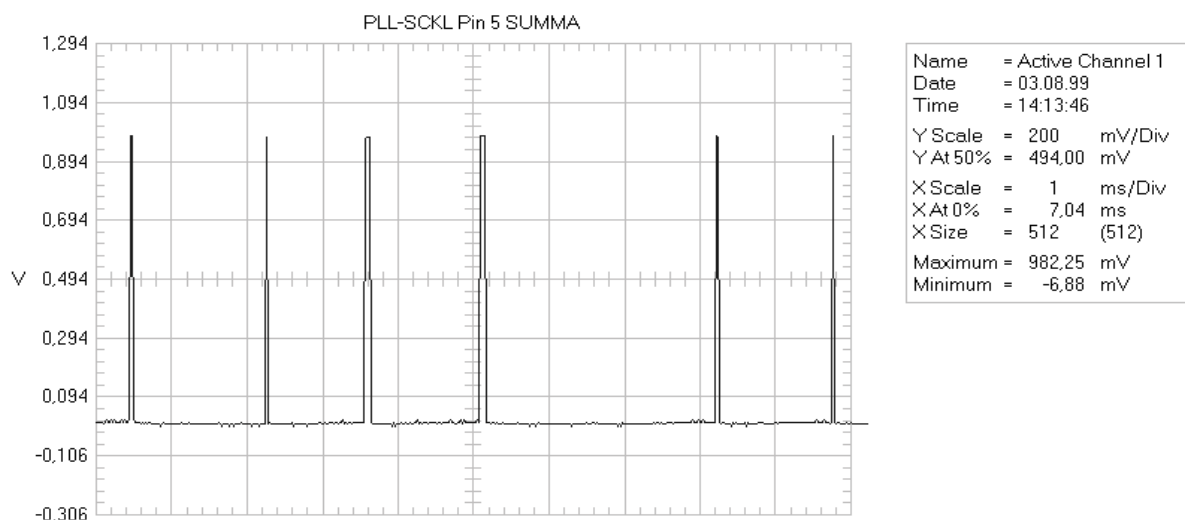


Figure 8:PLL-SDAT Signal

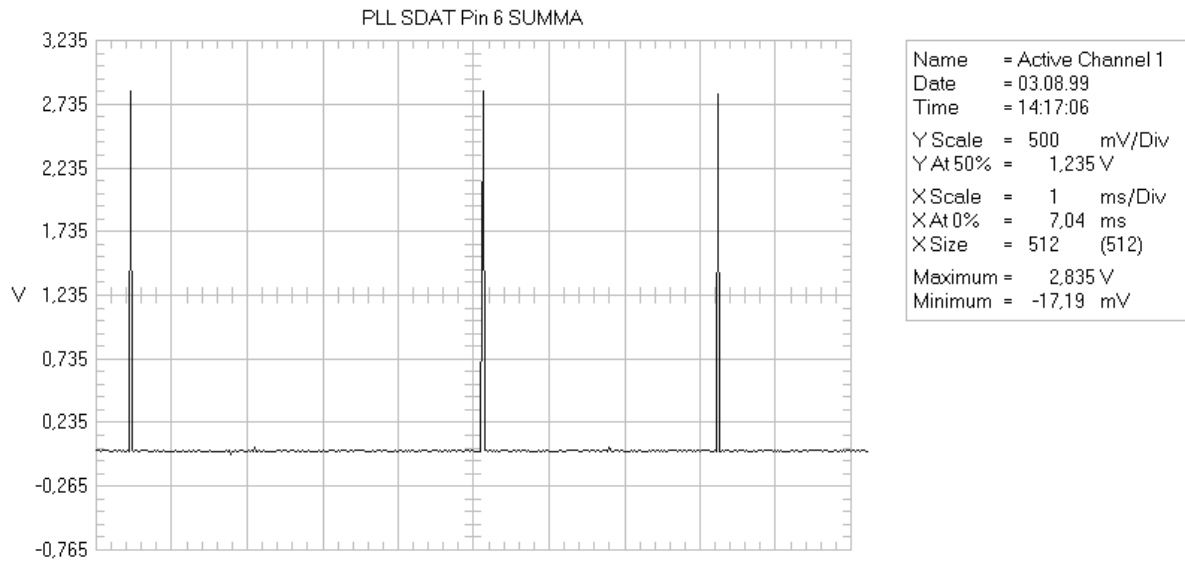
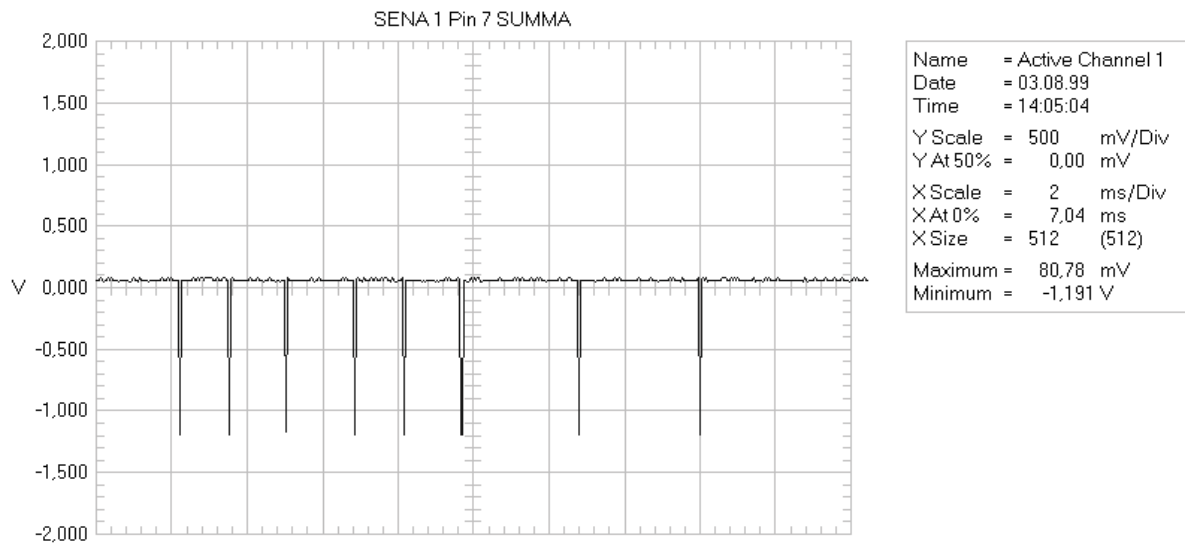


Figure 9:PLL-SENA Signal



No RX (no Rx calibration...RSSI reading fixed value)

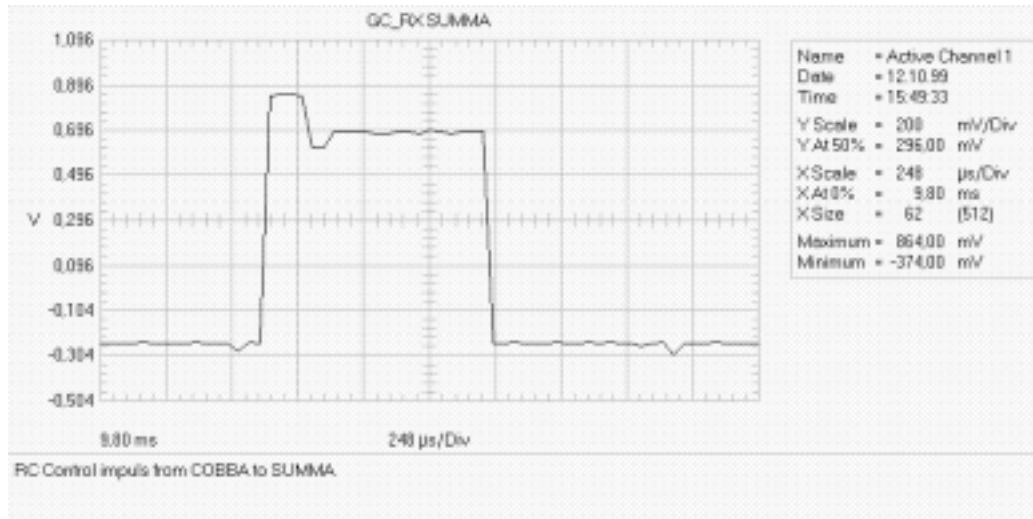
COBBA / MAD faulty /broken solder balls

- Check if the 13MHz IF on pin 23,24 N700 SUMMA change the amplitude if you change the generator frequency level
- Check if the RXC impulse on pin 36 N700 (SUMMA) change the amplitude if the generator frequency level is modified (see the diagram below) **(change the operation mode first to "RX BURST MODE")**
- Check R725 if any or low signals are measurable
- Change COBBA N200(rewrite SIMLOCK and update the handset)
- If the fault persist MAD or the PCB should be the reason
- In this case swap the handset because MAD is not changeable

Note! Rewrite SIMLOCK and IMEI entries with use of the Nokia security SW (SSSW) and make a SW-update or send this phones to the SACE, if this procedure is not permitted to you



Figure 10:RX-Control Signal



## Call breaks / No service

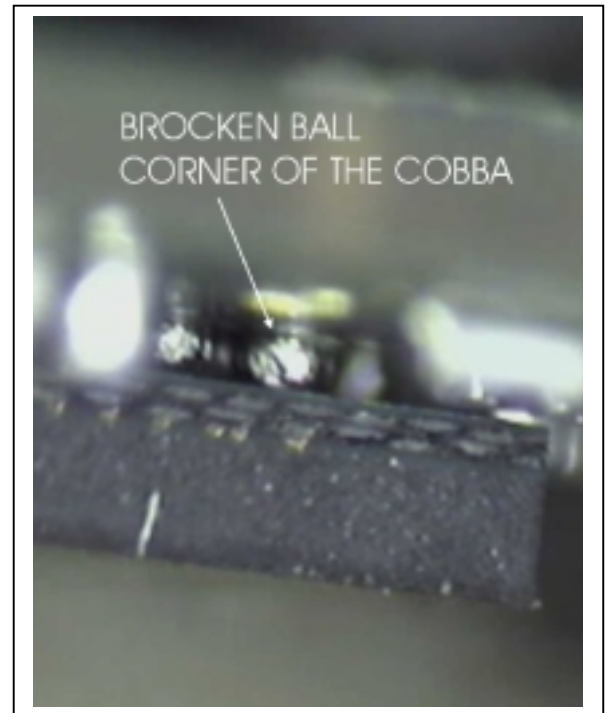
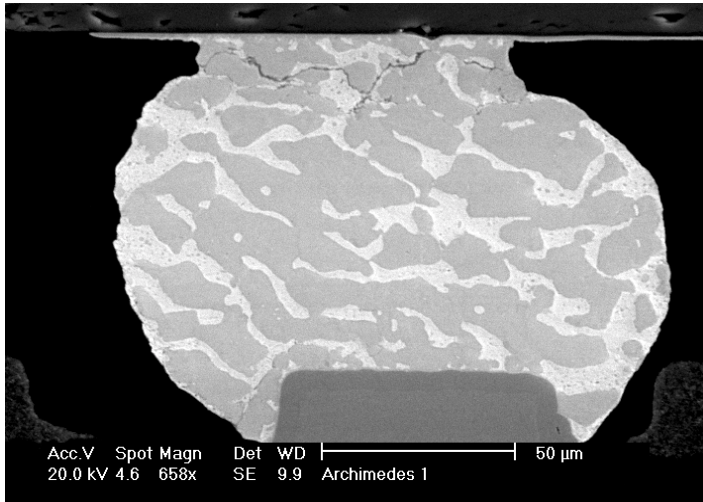
### G701 13MHz Oscillator out of range or high spurious emission

- Set the handset to call mode, check if some phase and frequency errors appear special in GSM 1800 band  
The deviations will be higher the higher the traffic channel is!
- Change the G701 13MHz Oscillator

### COBBA N200 broken solder balls

- Check VBB 2,8V DC on C117 near to CCONT
- Check VCOBBA 2,8V DC C148 near to COBBA
- Check COBBACKL 13MHz 3,2Vpp on J 201 (see the diagram in chapter "COBBA contact service" )
- Check the module in call modus with a simulator.
- Knock very careful with something no metallated around the COBBA
- Check if some errors appear on the tester (phase /frequency / RX-Quality/TX-Power level)
- Check the COBBA IC with a microscope, the first broken balls are normal on the corners from circuit.
- Change the circuit with a µBGA solder machine

The pictures indicate a typically case of broken solder ball under the  $\mu$ BGA. On the right you can see the little part of the COBBA IC view with a microscope. The PCB is on the top, and the COBBA are with the body to the bottom of the picture. The picture below shows a broken ball view through a X-ray machine



## No TX-Power or to low

See also the troubleshooting chapter 4.GSM transmitter and 5. PCN transmitter from service manual

### Z500 Duplexer Filter (Low TX-Power on GSM 900)

- Check the TX-Power level between the TX "in" and "Antenna" pad of the duplexer
- Resolder the ground and signal connection pads of the duplexer
- Change the duplexer

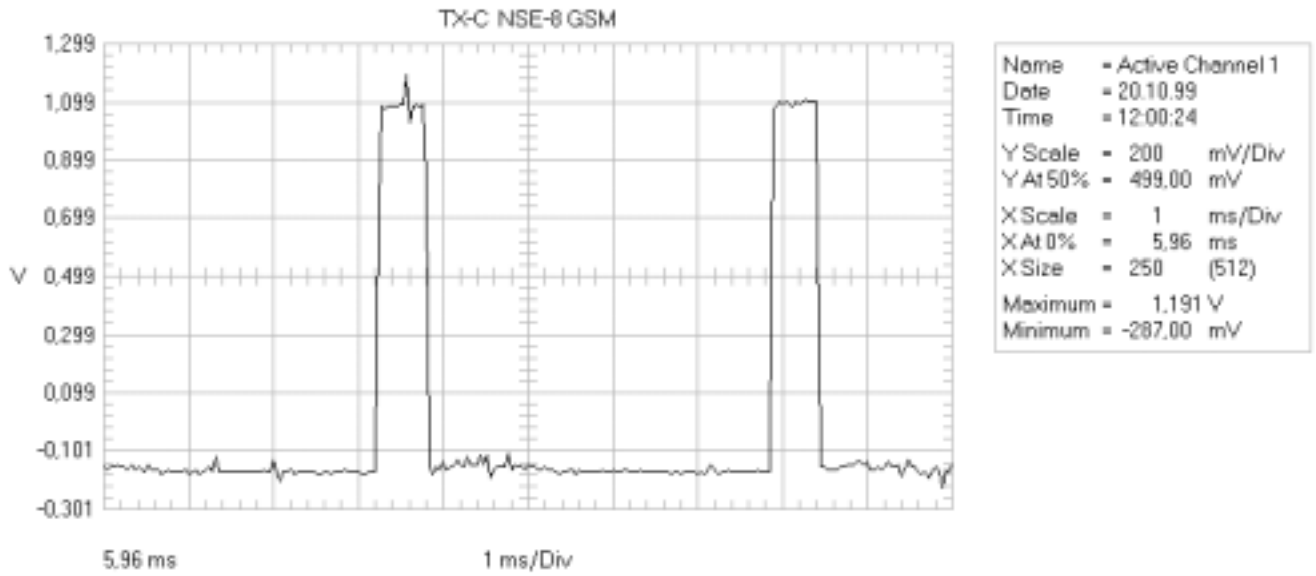
### Z504 RX/TX switch GSM1800 (Low TX-Power on GSM 1800)

- Check the 1V DC TX-switching voltage on Z504
- Check the TX-power difference between "TX" and "ANT" pad on Z504
- Change the Z504 if more than 2dBm difference are measurable

### N500 /N501 Power Amplifier GSM 900 /GSM 1800

- Check the power supply VDC\_OUT(3,2V→4,2V dependent to the power level) N500 /N501 pin 3
- Check the input power on pin N500/ N501 depend of the band (nominal 0dbm)
- Check the outgoing power on pin 4 N500/ N501
- Check the TX-Power control signal on pin 2 N500/ N501 , 0,7Vpp-1,7Vpp / 0,12..V - 0,2..V DC dependent of the power-level (see the diagram below)
- Change the PA if no power or to low power comes out and the power supply and control line are OK

Figure 11:TX-Control Signal



TX-control impuls on pin 2 from N500/N501  
example on GSM 900 TX-level 6 approx. 32dBm

## Change history

| Originator   | Status   | Version | Date       | Comment  |
|--------------|----------|---------|------------|--|
| Jose Marquez | Draft    | 0.2     | 22.10.1999 | First draft version for the repair group                       |
|              | Draft    | 0.3     | 02.11.199  | Insert comments from the repair team, add layout "Test Points" |
|              | approved | 1.0     | 05.11.1999 | First AMS version  |

Measurement points NSE-8

